

### 36-1730: Monoclonal Antibody to TGF-alpha (Transforming Growth Factor alpha)(Clone : P/T1)

<b>Clonality :</b>	Monoclonal
<b>Clone Name :</b>	P/T1
<b>Application :</b>	FACS,IF,IHC
<b>Reactivity :</b>	Human
<b>Gene :</b>	TGFA
<b>Gene ID :</b>	7039
<b>Uniprot ID :</b>	P01135
<b>Format :</b>	Purified
<b>Alternative Name :</b>	TGFA
<b>Isotype :</b>	Mouse IgG1, kappa
<b>Immunogen Information :</b>	A 10-amino acid synthetic peptide (aa34-43; PPVAAAVVSH) from human TGF?

#### Description

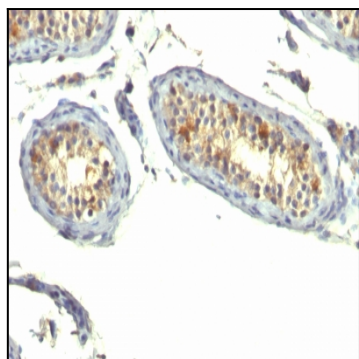
This antibody reacts with the TGF alpha and shows no cross-reaction with EGF and the neuropeptide synenkephalin. The staining with this MAb is completely blocked by the peptide used for raising this antibody. TGF (aa50) is a growth factor with 33% homology to EGF, binds to EGFR, activates tyrosine phosphorylation of the receptor, and stimulates cell proliferation. It plays a role in tumor initiation by inducing the reversible transformed phenotype.

#### Product Info

<b>Amount :</b>	100 µg
<b>Purification :</b>	Affinity Chromatography
<b>Content :</b>	100 µg in 500 µl PBS containing 0.05% BSA and 0.05% sodium azide. Sodium azide is highly toxic.
<b>Storage condition :</b>	Store the antibody at 4°C; stable for 6 months. For long-term storage; store at -20°C. Avoid repeated freeze and thaw cycles.

#### Application Note

Flow Cytometry (1-2ug/million cells); Immunofluorescence (1-2ug/ml); Immunohistochemistry (Formalin-fixed) (2-4ug/ml for 30 min at RT)(Staining of formalin-fixed tissues requires heating tissue sections in 10mM Tris with 1mM EDTA, pH 9.0, for 45 min at 95&degC followed by cooling at RT for 20 minutes);



Formalin-fixed, paraffin-embedded human Testicular Carcinoma stained with TGF alpha Monoclonal Antibody (P/T1)