

## 30-2707: Anti-Hu TROP2 APC

<b>Clonality :</b>	Monoclonal
<b>Clone Name :</b>	TrMab-6
<b>Application :</b>	FACS
<b>Reactivity :</b>	Pig
<b>Conjugate :</b>	APC
<b>Gene :</b>	TACSTD2
<b>Gene ID :</b>	4070
<b>Uniprot ID :</b>	P09758
<b>Alternative Name :</b>	tumor associated calcium signal transducer 2 TACSTD2, EGP1, GP50, M1S1, GA733-1
<b>Immunogen Information :</b>	TROP2-transfected CHO cells

## Description

TROP2 is a cell surface receptor that transduces calcium signals. It belongs to carcinoma-associated antigens. Mutations of TROP2 have been associated with gelatinous drop-like corneal dystrophy.

Specificity :The mouse monoclonal antibody TrMab-6 recognizes an extracellular epitope of TROP2, a type I transmembrane glycoprotein. This antibody is useful for detection of TROP2 in breast cancer.

## Product Info

<b>Amount :</b>	100 Tests
<b>Purification :</b>	Purified antibody is conjugated with activated allophycocyanin (APC) under optimum conditions and unconjugated antibody and free fluorochrome are removed by size-exclusion chromatography.
<b>Content :</b>	Concentration: 1 mg/ml Storage Buffer: Phosphate buffered saline (PBS), pH 7.4, 15 mM sodium azide
<b>Storage condition :</b>	Store at 2-8°C. Protect from prolonged exposure to light. Do not freeze.

## Application Note

Flow cytometry: The reagent is designed for analysis of human blood cells using 10  $\mu$ l reagent / 100  $\mu$ l of whole blood or  $10^6$  cells in a suspension. The content of a vial (1 ml) is sufficient for 100 tests.

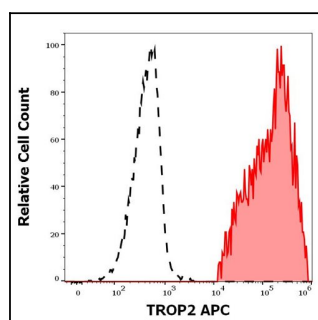


Figure 1: Separation of MCF-7 cells (red-filled) from leukocytes (black-dashed) in flow cytometry analysis (surface staining) stained using anti-human TROP2 (TrMab-6) APC antibody