

30-2715: Anti-Hu TCR Vdelta2 Purified

| | |
|--------------------------------|-------------------------------|
| Clonality : | Monoclonal |
| Clone Name : | B6 |
| Application : | FACS |
| Reactivity : | Human |
| Format : | Purified |
| Alternative Name : | TCRVD2 |
| Immunogen Information : | human recombinant TCR Vdelta2 |

Description

TCR Vdelta2 is a variant of TCR delta chain, that is present on a major subset of human gamma/delta T cells. TCR Vgamma9/Vdelta2 (or Vgamma2/Vdelta2) T cells are able to recognize and kill various tumor cells, as this receptor heterodimer binds to certain phosphoantigens, expressed by tumors. They can recognize these antigens in an MHC-unrestricted manner. Similarly to NK cells, Vdelta2 T cells express MHC I receptors and killer Ig-like receptors, that are involved in tumor recognition and cytotoxicity. The potentially cytotoxic subset of them is identified by cell surface expression of polysialylated CD56.

Specificity : The mouse monoclonal antibody B6 recognizes an extracellular epitope of human TCR Vdelta2, which is expressed on the majority of gamma/delta T cells.

Product Info

| | |
|----------------------------|---|
| Amount : | 0.1 mg |
| Purification : | Purified by protein-A affinity chromatography. |
| Content : | Concentration: 1 mg/ml Storage Buffer: Phosphate buffered saline (PBS), pH 7.4, 15 mM sodium azide |
| Storage condition : | Store at 2-8°C. Do not freeze. |

Application Note

Flow cytometry: Recommended dilution: 1-4 µg/ml.

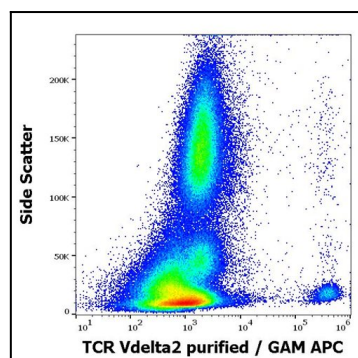


Figure 1: Flow cytometry surface staining pattern of human peripheral whole blood stained using anti-human TCR Vdelta2 (B6) purified antibody

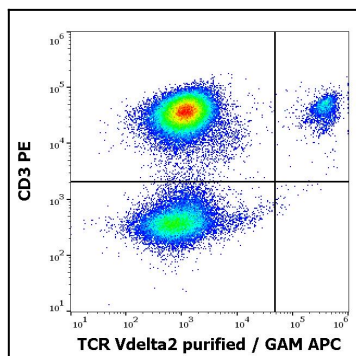


Figure 2: Flow cytometry multicolor surface staining pattern of human lymphocytes using anti-human TCR Vdelta2 (B6) purified antibody and anti-human CD3 (UCHT1) PE antibody

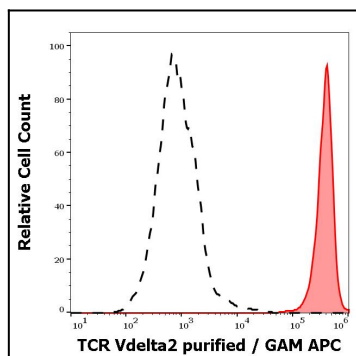


Figure 3: Separation of human TCR Vdelta2 positive lymphocytes (red-filled) from human TCR Vdelta2 negative lymphocytes (black-dashed) in flow cytometry analysis (surface staining) of peripheral whole blood stained using anti-human TCR Vdelta2 (B6) purified antibody