

### 30-2716: Anti-Hu TCR gamma/delta Purified (Clone: 11F2)

<b>Clonality :</b>	Monoclonal
<b>Clone Name :</b>	11F2
<b>Application :</b>	FACS
<b>Reactivity :</b>	Human
<b>Format :</b>	Purified
<b>Alternative Name :</b>	TCRG/D
<b>Immunogen Information :</b>	Purified CD3 antigen complex

#### Description

The antigen-specific T cell receptor (TCR) is composed of either alpha and beta subunit, or gamma and delta subunit. Majority of T cells present in the blood, lymph and secondary lymphoid organs express TCR alpha/beta heterodimers, whereas the T cells expressing TCR gamma/delta heterodimers are localized mainly in epithelial tissues and at the sites of infection. The subunits of TCR heterodimers are covalently bonded and in the endoplasmic reticulum they associate with CD3 subunits to form functional TCR-CD3 complex. Lack of expression of any of the chains is sufficient to stop cell surface expression.

**Specificity :** The mouse monoclonal antibody 11F2 recognizes an extracellular epitope in all molecular forms of the TCR gamma/delta.

#### Product Info

<b>Amount :</b>	0.1 mg
<b>Purification :</b>	Purified by protein-A affinity chromatography.
<b>Content :</b>	Storage Buffer: Stabilizing phosphate buffered saline (PBS), pH 7.4, 15 mM sodium azide
<b>Storage condition :</b>	Store at 2-8°C. Do not freeze.

#### Application Note

Flow cytometry: Recommended dilution: 1-4 µg/ml.

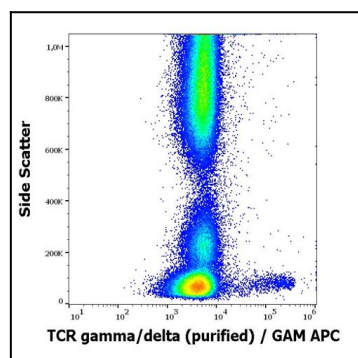


Figure 1: Flow cytometry surface staining pattern of human peripheral whole blood stained using anti-human TCR gamma/delta purified antibody