

## 30-2726: Anti-Hu NKp80 Purified (Clone: 5D12)

<b>Clonality :</b>	Monoclonal
<b>Clone Name :</b>	5D12
<b>Application :</b>	FACS
<b>Reactivity :</b>	Human
<b>Gene :</b>	KLRF1
<b>Gene ID :</b>	51348
<b>Uniprot ID :</b>	Q9NZS2
<b>Format :</b>	Purified
<b>Alternative Name :</b>	killer cell lectin like receptor F1 KLRF1, CLEC5C
<b>Immunogen Information :</b>	recombinant human NKp80 extracellular domain

### Description

NKp80, also known as CLEC5C or KLRF1, is a type II transmembrane glycoprotein of the C lectin family, which is expressed in 80 kDa homodimers on NK cells, and subsets of CD8+ alpha/beta T cells, and gamma/delta T cells. It belongs to the activating coreceptors, which induce cytotoxicity, and production of pro-inflammatory cytokines. Its ligand AICL is expressed on myeloid cells.

**Specificity :** The mouse monoclonal antibody 5D12 recognizes an extracellular epitope of human NKp80 (CLEC5C), a C-type lectin family member, expressed on NK cells and subsets of T cells.

### Product Info

<b>Amount :</b>	0.1 mg
<b>Purification :</b>	Purified by protein-A affinity chromatography.
<b>Content :</b>	Concentration: 1 mg/ml Storage Buffer: Phosphate buffered saline (PBS), pH 7.4, 15 mM sodium azide
<b>Storage condition :</b>	Store at 2-8°C. Do not freeze.

### Application Note

Flow cytometry: Recommended dilution: 1-4 µg/ml.

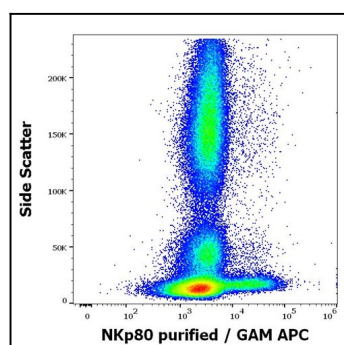


Figure 1: Flow cytometry surface staining pattern of human peripheral whole blood stained using anti-human NKp80 (5D12) purified antibody (concentration in sample 1,7 µg/ml, GAM APC).

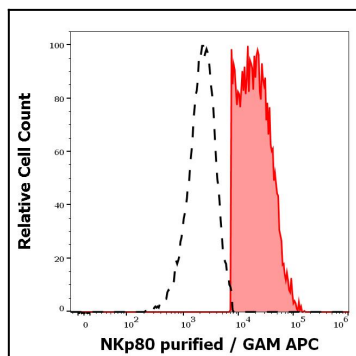


Figure 2: Separation of human NKp80 positive cells (red-filled) from human NKp80 negative lymphocytes (black-dashed) in flow cytometry analysis (surface staining) of peripheral whole blood stained using anti-human NKp80 (5D12) purified antibody (concentration in sample 1,7 µg/ml, GAM APC).