

30-2728: Anti-mCherry purified

Clonality :	Polyclonal
Clone Name :	PAb (918)
Application :	WB
Gene :	mCherry
Uniprot ID :	X5DSL3
Format :	Purified
Immunogen Information :	mCherry protein from Anaplasma marginale

Description

The mCherry is a red fluorescent protein with excitation maximum 587 nm and emission maximum 610 nm. It has around 28 kDa, and it is being used as a fluorescent tag in expression systems.

Specificity :The rabbit polyclonal antibody PAb (918) recognizes a red fluorescent protein tag mCherry.

Product Info

Amount :	0.1 mg
Purification :	Purified by ligand affinity chromatography.
Content :	Concentration: 1 mg/ml Storage Buffer: Stabilizing phosphate buffered saline (PBS), pH 7.4, 15 mM sodium azide
Storage condition :	Store at 2-8°C. Do not freeze.

Application Note

Flow cytometry: Recommended dilution: 1-4 μ g/ml, extracellular staining or intracellular staining - depending on expression.

Western blotting: Recommended dilution: 1-2 μ g/ml.

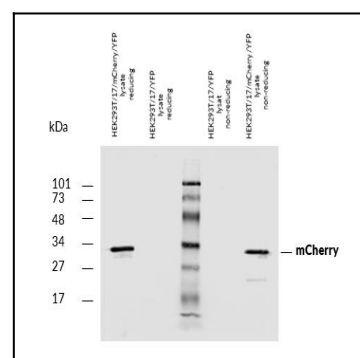


Figure 1: Western blotting analysis of mCherry fluorescent protein using rabbit polyclonal PAb (918) on lysates of HEK293T/17 cells co-transfected with mCherry/GPI and YFP/GPI constructs (HEK293T/17 cells transfected with YFP/GPI; negative control) under reducing and non-reducing conditions. Nitrocellulose membrane was probed with 2 μ g/ml of rabbit anti-mCherry polyclonal antibody followed by IRDye800-conjugated anti-rabbit secondary antibody. A specific band was detected for mCherry protein at approximately 30 kDa.

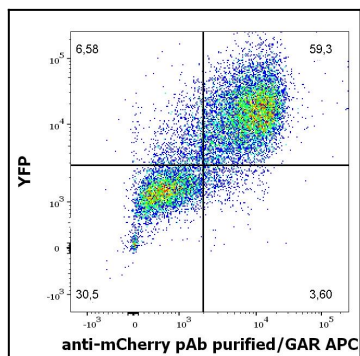


Figure 2: Flow cytometry surface staining pattern of HEK293T/17 cells co-transfected with mCherry/GPI and YFP/GPI constructs stained using anti-mCherry Purified rabbit polyclonal antibody

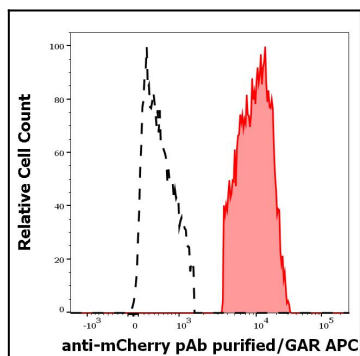


Figure 3: Separation of HEK293T/17 cells co-transfected with mCherry/GPI and YFP/GPI constructs stained anti-mCherry Purified rabbit polyclonal antibody (red-filled) from HEK293T/17 cells co-transfected with mCherry/GPI and YFP/GPI constructs unstained by primary polyclonal antibody (GAR APC, black-dashed) in flow cytometry analysis (surface staining) of HEK293T17/mCherry/YFP cell suspension.