

### 30-2820: Anti-Hu CD187 PE

<b>Clonality :</b>	Monoclonal
<b>Clone Name :</b>	10D1-J16
<b>Application :</b>	FACS
<b>Reactivity :</b>	Human
<b>Conjugate :</b>	PE
<b>Gene :</b>	ACKR3
<b>Gene ID :</b>	57007
<b>Uniprot ID :</b>	P25106
<b>Alternative Name :</b>	atypical chemokine receptor 3 CXCR7, RDC1, GPR159, ACKR3

#### Description

CD187 (CXCR7) is a member of chemokine receptor family, but with discussed specificity. It is expressed in various tissues and cells, such as placenta, urinary bladder, fetal liver cells, tumor cells, activated endothelium, monocytes, lymphocytes, mature dendritic cells, and other.

**Specificity :** The mouse monoclonal antibody 10D1-J16 recognizes an extracellular epitope on CD187/CXCR7, a transmembrane protein of chemokine receptor family.

#### Product Info

<b>Amount :</b>	100 Tests
<b>Purification :</b>	Purified antibody is conjugated with R-phycoerythrin (PE) under optimum conditions. Unconjugated antibody and free fluorochrome are removed by size-exclusion chromatography.
<b>Content :</b>	Concentration: 1 mg/ml Storage Buffer: Phosphate buffered saline (PBS), pH 7.4
<b>Storage condition :</b>	Store at 2-8°C. Protect from prolonged exposure to light. Do not freeze.

#### Application Note

**Flow cytometry:** The reagent is designed for analysis of human blood cells using 10 µl reagent / 100 µl of whole blood or 10<sup>6</sup> cells in a suspension. The content of a vial (1 ml) is sufficient for 100 tests.

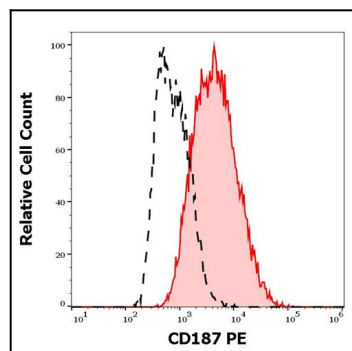


Figure 1: Separation of MCF-7 cells stained using anti-human CD187 PE antibody from MCF-7 cells stained using mouse IgG2a isotype control PE antibody in flow cytometry analysis (surface staining) of MCF-7 cell suspension.