

30-2835: Anti-Human CD368 MAb (Clone: 9B9)

| | |
|--------------------------------|---|
| Clonality : | Monoclonal |
| Clone Name : | 9B9 |
| Application : | IP,ICC,ELISA,FACS |
| Reactivity : | Human,Non-Human Primates |
| Gene : | CLEC4D |
| Gene ID : | 338339 |
| Uniprot ID : | Q8WXI8 |
| Alternative Name : | C-type lectin domain family 4 member D,CLEC6, CLEC4D, dectin 3, MCL, MPCL |
| Isotype : | Mouse IgG2b kappa |
| Immunogen Information : | CD368 ectodomain fused with human Fc |

Description

Specificity : The mouse monoclonal antibody 9B9 recognizes an extracellular epitope of CD368, a type II transmembrane protein of C lectin family, expressed mainly on monocytes and neutrophils.

Description : CD368 is an approximately 25-30 kDa C-type lectin, which serves as one of pattern recognition receptors of the innate immune system. It recognizes pathogen-associated molecular patterns of bacteria and fungi, such as alpha-mannans or trehalose 6,6'-dimycolate, and transfers the signal downstream using associated Fc receptor gamma chain. CD368 is expressed on neutrophils, monocytes, and on some populations of blood dendritic cells, but it decreases during differentiation of monocytes into dendritic cells or macrophages. Increased expression can be induced by IFN-gamma, TNF-alpha, IL-6, and IL-10. CD368 triggering leads to driving of antigen-presenting cells maturation and to promotion of T cell differentiation into Th1 and Th17.

Product Info

| | |
|----------------------------|--|
| Amount : | 0.1 mg |
| Purification : | Purified by protein-A affinity chromatography. |
| Content : | 1 mg/ml Storage Buffer: Phosphate buffered saline (PBS), pH 7.4, 15 mM sodium azide |
| Storage condition : | Store at 2-8°C. Do not freeze. |

Application Note

Flow cytometry: Recommended dilution: 1-5 µg/ml

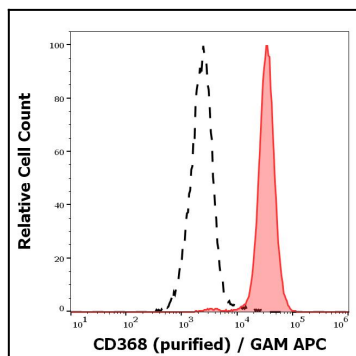


Figure 1: Flow cytometry surface staining pattern of human peripheral whole blood stained using anti-human CD368 (9B9) purified antibody (concentration in sample 5 μ g/ml, GAM APC).

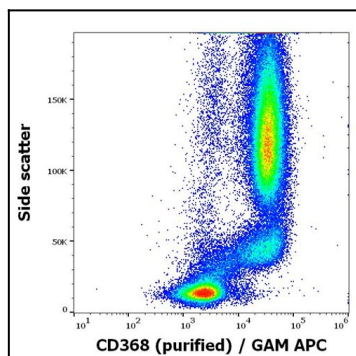


Figure 2: Separation of human neutrophil granulocytes (red-filled) from human lymphocytes (black-dashed) in flow cytometry analysis (surface staining) stained using anti-human CD368 (9B9) purified antibody (concentration in sample 5 μ g/ml, GAM APC).