

## 21-1020: Recombinant TLR5 Protein with human Fc Tag

**Application :** ELISA, WB

### Description

Source: **CHO-K1**. **Toll like** receptor 5 (TLR5) plays a fundamental role in pathogen recognition and downstream signaling to induce effective immunity. It is well expressed in major old tissues including lung, skin, intestine, and spleen. TLR5 is present in synovial of patients with rheumatoid arthritis (RA), act as novel mediator of innate immunity-induced osteoclastogenesis and bone loss. TLR5 is a receptor for flagellin and is present on the basolateral surface of intestinal epithelial cells. It is involved in the migration of intestinal epithelial cells through activation of the p38 MAPK pathway. TLR5-mediated signaling specifically enhanced the maturation of lung dendritic cells. TLR5 influences the progression and outcome of ovarian, sarcoma, and luminal breast tumors. Mutations in TLR5 have been associated with both resistance and susceptibility to systemic lupus erythematosus, and susceptibility to Legionnaire disease.

TLR5 Human Recombinant produced in CHO-K1 cells is a single, glycosylated polypeptide chain containing 618 amino acids (21-639 aa) and having a molecular mass of 68kDa (Migrates at 70-80kDa on SDS-PAGE under reducing conditions). TLR5 is expressed with human Fc tag (27 kDa) at C-Terminus and purified by protein G column. Total size of the protein is approximately 105 kDa.

### Product Info

<b>Amount :</b>	25 µg
<b>Purification :</b>	>90% by SDS-PAGE.
<b>Content :</b>	Protein is suspended in sterile PBS, pH 7.4
<b>Storage condition :</b>	Recombinant TLR5-Fc Protein is shipped on ice packs. Upon arrival, Store at -20°C. Do not freeze-thaw multiple times.

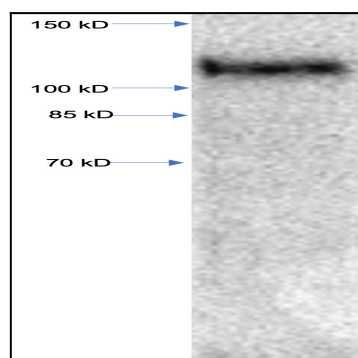


Figure 1: Western Blot analysis of TLR5-Fc (21-1020). 5ug of recombinant protein was loaded. Goat Anti-Human IgG HRP was used in western.