

12-2001: Anti-PD-1(Opdivo)(Nivolumab biosimilar) mAb

Clonality : Monoclonal

Application : ELISA

Reactivity : Human

Isotype : IgG4

Description

Nivolumab (Optivo), Pembrolizumab are both PD-1 inhibitors. PD-1 is a "checkpoint" protein on immune cells that alerts them not to attack cells that express PD-L1. Some cancer cells express PD-L1, which enables them to "switch off" an immune system response. Monoclonal antibodies such as pembrolizumab and nivolumab block this signaling between PD-1 and PD-L1 and thereby reinforce the immune system response to tumor cells.

Research grade biosimilar. Not for use in therapeutic or diagnostic procedures for humans or animals.

Product Info

Amount : 100 µg

Purification : Purified from cell culture supernatant by affinity chromatography

Storage condition : Store at -20°C to -80°C (Avoid repeated freezing and thawing).

Application Note

ELISA 1:5000-10000, FACS 1:100

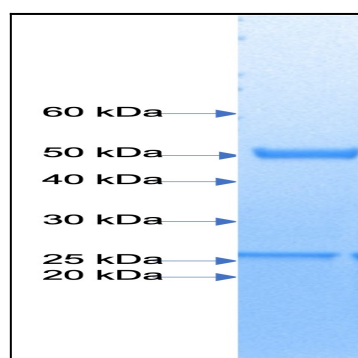


Fig. 1: Coomassie Staining of Anti-PD-1(Opdivo)(Nivolumab biosimilar) mAb, 2ug of protein was loaded.

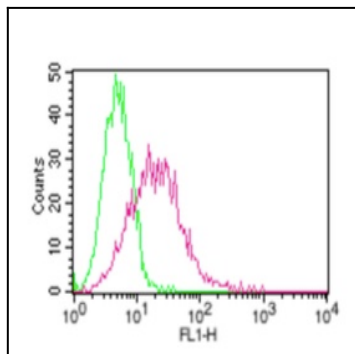


Figure 2: Flow Cytometry analysis: Anti-PD-1 (Opdivo) binds on the cell surface of PD-1 stable cell line (Cat No. 14-500ACL) using 0.5 ug of antibody. Green represents Anti-human IgG isotype control, red represents Anti-PD-1 (Opdivo)(Nivolumab biosimilar). FITC conjugated Goat anti-Human Fc was used as secondary antibody.