

## 30-2861: Anti-Human CD316 MAb (Clone :8A12)

<b>Clonality :</b>	Monoclonal
<b>Clone Name :</b>	8A12
<b>Application :</b>	IP,IHC,FACS
<b>Reactivity :</b>	Human
<b>Gene :</b>	IGSF8
<b>Gene ID :</b>	93185
<b>Uniprot ID :</b>	Q969P0
<b>Format :</b>	Purified
<b>Alternative Name :</b>	immunoglobulin superfamily member 8, EWI2, PGRL, KCT-4, LIR-D1, IGSF8
<b>Isotype :</b>	Mouse IgG2a
<b>Immunogen Information :</b>	human leukocytes

### Description

**Specificity:** The mouse monoclonal antibody 8A12 recognizes an extracellular epitope of CD316, a type I transmembrane glycoprotein, expressed mainly by lymphocytes, NK cells and in a broad range of tissues.

CD316 is an approximately 63 kDa transmembrane glycoprotein, which forms stable complexes with CD9, as well as with CD81. It seems that CD316 participates in regulation of cell polarity and motility, in cell proliferation, oocyte fertilization and tumor cell metastasis. It is expressed mainly by lymphocytes, NK cells and in a broad range of tissues, and associates with actin cytoskeleton.

### Product Info

<b>Amount :</b>	0.1 mg (C100)
<b>Purification :</b>	Purified by protein-A affinity chromatography.
<b>Content :</b>	1 mg/ml Formulation: Phosphate buffered saline (PBS), pH 7.4, 15 mM sodium azide
<b>Storage condition :</b>	Store at 2-8°C. Do not freeze.

### Application Note

Flow cytometry: Recommended dilution: 1-5 µg/ml

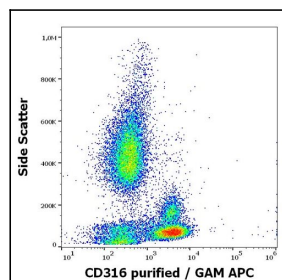


Fig1: Flow cytometry surface staining pattern of human peripheral whole blood stained using anti-human CD316 (8A12) purified antibody (concentration in sample 5 1¼g/ml, GAM APC).

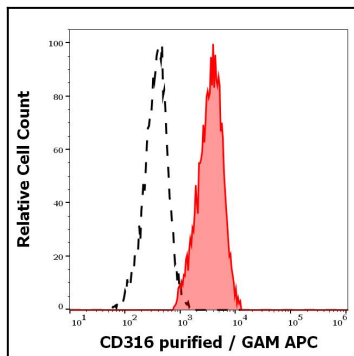


Fig 2: Separation of human lymphocytes (red-filled) from neutrophil granulocytes (black-dashed) in flow cytometry analysis (surface staining) of human peripheral whole blood stained using anti-human CD316 (8A12) purified antibody (concentration in sample 5  $\mu$ g/ml, GAM APC).