

JOT0001-2: Anti-GFP VHH antibody, biotinylated

Clonality :	Monoclonal
Clone Name :	GE10
Application :	ELISA, WB
Gene :	GFP
Uniprot ID :	P42212
Alternative Name :	Green fluorescent protein
Isotype :	Camelid VHH

Description

Specificity: Green fluorescent protein (GFP)

Description : Alpaca derived anti-GFP VHH single domain antibody, biotinylated (molecular weight: 15.82 kDa), expressed in E. coli under conditions free from animal derived components.

Conjugate and tags : A 6*His tag at its C-terminal, followed by an Avi tag. The single lysine residue in the Avitag is enzymatically labeled with one biotin.

Analyte Description : Green fluorescent protein (GFP) is a protein composed of 238 amino acid residues (26.9 kDa) derived from the Jellyfish *Aequorea victoria*, which emits green light (emission peak at 509 nm) when excited by blue light (excitation peak at 395 nm). GFP has become an invaluable tool in cell biology research, since its intrinsic fluorescence can be visualized in living cells. EGFP contains the double-amino-acid substitutions Phe-64 to Leu and Ser-65 to Thr (previously published as GFPmut1; PMID: 8707053). In contrast to wtGFP, EGFP has a single, strong, red-shifted excitation peak at 488 nm.

This is a product from [Jotbody](#), Hong Kong. This antibody is made available worldwide by ABEOMICS Inc.

Product Info

Amount :	100 µg / 50 µg
Purification :	Affinity chromatography purified via Ni-charged resin
	Format: Liquid
Content :	Product Buffer Solution: 25 mM TAPS pH8.5, 500 mM NaCl, 5 mM EDTA, 0.1 % Proclin 300 Solution
	Product Concentration : 1 mg/mL by Nanodrop
Storage condition :	4°C; Do not freeze.

Application Note

ELISA 1:9000-1:200000

WB 1:500-1:5000

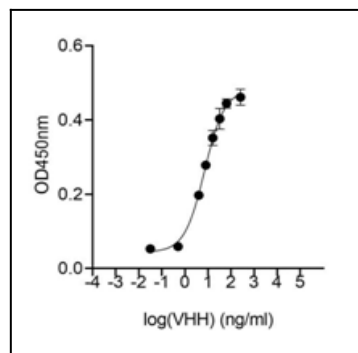


Fig 1: Indirect ELISA showing anti-GFP VHH antibody, biotinylated(JOT0001-2) binding to purified GFP. Plates were coated with 100ng/well purified protein and binding of JOT0001-2 assessed in serial dilution from 1ng/ml primary antibody in triplicate

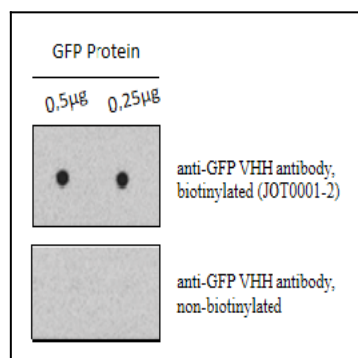


Fig 2: Purified GFP protein on the PVDF membrane was first incubated with anti-GFP VHH antibody, biotinylated(JOT0001-2) or anti-GFP VHH antibody, non-biotinylated overnight at 4°C, then followed by HRP-conjugated Streptavidin at dilution of 1:3000 for one hour at room temperature.