

## 12-9394: Anti-FOLR1(farletuzumab biosimilar) mAb

<b>Clonality :</b>	Monoclonal
<b>Application :</b>	FACS
<b>Reactivity :</b>	Human
<b>Uniprot ID :</b>	P15328
<b>Alternative Name :</b>	M3,MORAb-003,FBP, FOLR, FRalpha, NCFTD
<b>Isotype :</b>	IgG1

### Description

Anti-FOLR1(farletuzumab biosimilar) mAb

### Product Info

<b>Amount :</b>	50 µg / 100 µg
<b>Content :</b>	Buffer: Lyophilized from sterile PBS, pH 7.4. Normally 5 % - 8% trehalose is added as protectants before lyophilization.
<b>Storage condition :</b>	Store at -20°C to -80°C for 12 months in lyophilized form. After reconstitution, if not intended for use within a month, aliquot and store at -80°C (Avoid repeated freezing and thawing).Lyophilized antibodies are shipped at ambient temperature.

### Application Note

Flow Cyt 1:100

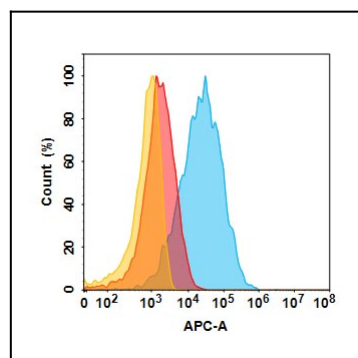


Figure 1. FOLR1 protein is highly expressed on the surface of Expi293 cell membrane. Flow cytometry analysis with 1µg/mL Anti-FOLR1(farletuzumab biosimilar) mAb on Expi293 cells transfected with human FOLR1 (Blue histogram) or Expi293 transfected with irrelevant protein (Red histogram),and Isotype antibody on Expi293 transfected with irrelevant protein (Orange histogram)

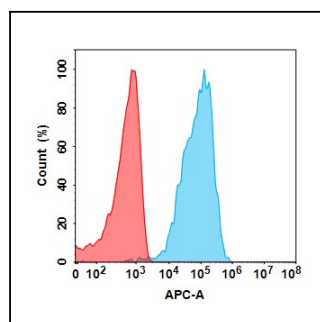


Figure 2. FOLR1 protein is highly expressed on the surface of HeLa cell membrane. Flow cytometry analysis with 1µg/mL Anti-FOLR1(farletuzumab biosimilar) mAb on HeLa cells (Blue histogram) or Isotype antibody on HeLa transfected with irrelevant protein (Red histogram).

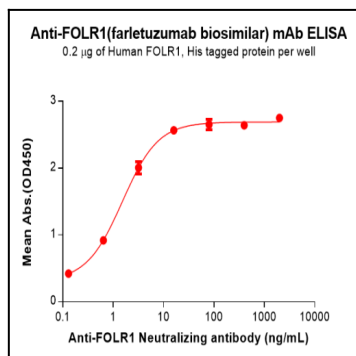


Figure 3. ELISA plate pre-coated by 2 µg/mL (100 µL/well) Human FOLR1 Protein, His Tag can bind Anti-FOLR1(farletuzumab biosimilar) mAb in a linear range of 0.64-16 ng/mL.