

## 12-9397: Anti-Mesothelin VHH-human IgG1 Fc

**Clonality :** Monoclonal  
**Application :** ELISA, FACS  
**Reactivity :** Human  
**Uniprot ID :** Q13421  
**Alternative Name :** LB1902, MSLN, MPF  
**Isotype :** IgG1

### Description

Anti-Mesothelin VHH-human IgG1 Fc

### Product Info

**Amount :** 50 µg / 100 µg  
**Content :** Buffer: Lyophilized from sterile PBS, pH 7.4. Normally 5 % - 8% trehalose is added as protectants before lyophilization.  
**Storage condition :** Store at -20°C to -80°C for 12 months in lyophilized form. After reconstitution, if not intended for use within a month, aliquot and store at -80°C (Avoid repeated freezing and thawing). Lyophilized antibodies are shipped at ambient temperature.

### Application Note

ELISA 1:5000-10000, Flow Cyt 1:100

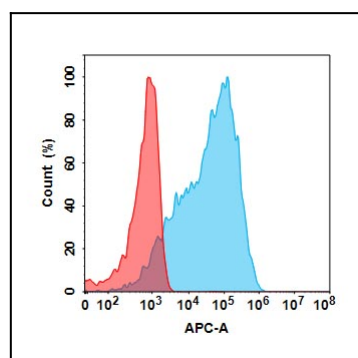


Figure 1. Flow cytometry analysis with 1µg/mL Anti-Mesothelin VHH-human IgG1 Fc on Expi293 cells transfected with Human Mesothelin protein (Blue histogram) or Expi293 transfected with irrelevant protein (Red histogram).

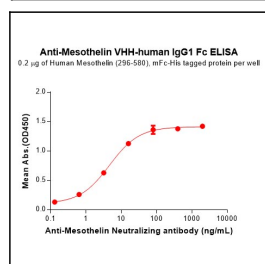


Figure 2. ELISA plate pre-coated by 2 µg/mL (100 µL/well) Human Mesothelin (296-580) Protein, mFc-His Tag can bind Anti-Mesothelin VHH-human IgG1 Fc in a linear range of 0.64–16 ng/mL.