

30-2891: Anti-CD325 APC Mab(8C11)

Clonality :	Monoclonal
Clone Name :	8C11
Application :	FACS
Reactivity :	Human
Conjugate :	APC
Gene ID :	1000
Uniprot ID :	P19022
Isotype :	Mouse IgG1 kappa
Immunogen Information :	bacterially expressed extracellular domain of human CD325

Description

Specificity: The mouse monoclonal antibody 8C11 recognizes an extracellular epitope of CD325 (N-cadherin), a transmembrane protein associated with actin cytoskeleton system, which is expressed mainly by neurons, osteoblasts, endothelial cells, and stem cells.

CD325 (N-cadherin) is a type I transmembrane protein, which forms a complex with catenins, that is linked to the actin cytoskeleton. This complex is important in synapses and for functional plasticity of neurons, and is also essential for embryonic development. Decreased CD325 cleavage caused by mutations in presenilin 1 is associated with Alzheimer's disease. Besides nervous system, CD325 is expressed on the surface of malignant T cells, and increases their adhesion to epithelia, as well as their ability to invade and metastasize to inflammatory sites.

Product Info

Amount :	100 Tests
Purification :	Purified antibody is conjugated with activated allophycocyanin (APC) under optimum conditions and unconjugated antibody and free fluorochrome are removed by size-exclusion chromatography.
Content :	Formulation: Stabilizing phosphate buffered saline (PBS), pH 7.4, 15 mM sodium azide
Storage condition :	Store at 2-8°C. Protect from prolonged exposure to light. Do not freeze.

Application Note

Flow cytometry: The reagent is designed for analysis of human blood cells using 10 µl reagent / 100 µl of whole blood or 10⁶ cells in a suspension. The content of a vial (1 ml) is sufficient for 100 tests.

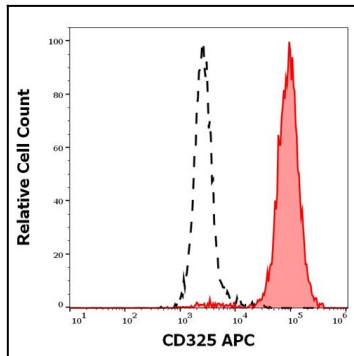


Figure 1: Separation of HeLa cells stained using anti-human CD325 (8C11) APC antibody (10 μ l reagent per million cells in 100 μ l of cell suspension, red-filled) from HeLa cells stained using mouse IgG1 isotype control (MOPC-21) APC antibody (concentration in sample 15 μ g/ml, same as CD325 APC concentration, black-dashed) in flow cytometry analysis (surface staining).