

## 32-17571: Human APLP2 Protein, His Tag

**Clone Name :** APLP2  
**Reactivity :** Human  
**Uniprot ID :** Q06481  
**Alternative Name :** APLP-2, APPH, APPL2, CDEBP

### Description

**Molecular Weight :** Human APLP2 protein has a predicted molecular mass of 76.9 kDa after removal of the signal peptide. The apparent molecular mass of APLP2-His is approximately 100-130 kDa due to glycosylation.

**Molecular Characterization:** APLP2(Gly32-Ser692) 6×His tag

Human APLP2 gene encodes amyloid precursor- like protein 2 (APLP2), which is a member of the APP (amyloid precursor protein) family including APP, APLP1 and APLP2. This protein is ubiquitously expressed. It contains heparin-, copper- and zinc- binding domains at the N-terminus, BPTI/Kunitz inhibitor and E2 domains in the middle region, and transmembrane and intracellular domains at the C-terminus. This protein interacts with major histocompatibility complex (MHC) class I molecules. The synergy of this protein and the APP is required to mediate neuromuscular transmission, spatial learning and synaptic plasticity. This protein has been implicated in the pathogenesis of Alzheimer's disease. Multiple alternatively spliced transcript variants encoding different isoforms have been identified.

### Product Info

**Amount :** 10 µg / 50 µg  
**Purification :** The purity of the protein is greater than 85% as determined by SDS-PAGE and Coomassie blue staining.  
**Content :** Formulation and reconstitution: Lyophilized from sterile PBS, pH 7.4. Normally 5 % " 8% trehalose is added as protectants before lyophilization.  
**Storage condition :** Store at -20°C to -80°C for 12 months in lyophilized form. After reconstitution, if not intended for use within a month, aliquot and store at -80°C (Avoid repeated freezing and thawing). Lyophilized proteins are shipped at ambient temperature.

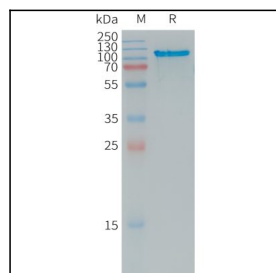


Figure 1. Human APLP2 Protein, His Tag on SDS-PAGE under reducing condition.