

## 32-18246: Human KLRG1 Protein, hFc Tag

**Uniprot ID :** Q96E93

**Alternative Name :** CLEC15A;MAFA;MAFAL

### Description

**Description :** Recombinant Human KLRG1 protein with N-terminal human Fc

**Background :** Natural killer (NK) cells are lymphocytes that can mediate lysis of certain tumor cells and virus-infected cells without previous activation. They can also regulate specific humoral and cell-mediated immunity. The protein encoded by this gene belongs to the killer cell lectin-like receptor (KLR) family, which is a group of transmembrane proteins preferentially expressed in NK cells. Studies in mice suggested that the expression of this gene may be regulated by MHC class I molecules.

**Molecular Characterization:** mass of 41.6 kDa after removal of the signal peptide. The apparent molecular mass of hFc-KLRG1 is approximately 55-70 kDa due to glycosylation.

**Tag :** N-Human Fc Tag

### Product Info

**Amount :** 50 µg / 100 µg

**Purification :** The purity of the protein is greater than 90% as determined by SDS-PAGE and Coomassie blue staining.

**Content :** Lyophilized from sterile PBS, pH 7.4. Normally 5 % - 8% trehalose is added as protectants before lyophilization.

**Storage condition :** Store at -20°C to -80°C for 12 months in lyophilized form. After reconstitution, if not intended for use within a month, aliquot and store at -80°C (Avoid repeated freezing and thawing). Lyophilized proteins are shipped at ambient temperature.

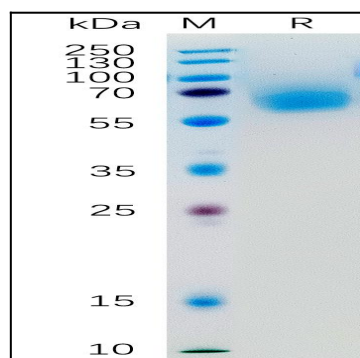


Figure 1. Human KLRG1 Protein, hFc Tag on SDS-PAGE under reducing condition.

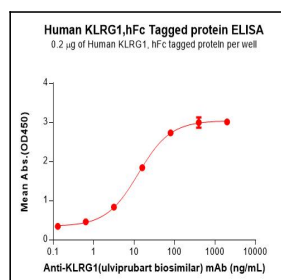


Figure 2. ELISA plate pre-coated by 2 µg/mL (100 µL/well) Human KLRG1 Protein, hFc Tag can bind Anti-KLRG1 (ulviprubart biosimilar) mAb in a linear range of 3.20-80 ng/mL.