

## 32-18285: Human MELTF Protein, His Tag

**Uniprot ID :** P08582

**Alternative Name :** CD228;MAP97;MFI2;MTf;MTF1

### Description

**Description :** Recombinant Human MELTF Protein with C-terminal 6XHis tag

**Background :** The protein encoded by this gene is a cell-surface glycoprotein found on melanoma cells. The protein shares sequence similarity and iron-binding properties with members of the transferrin superfamily. The importance of the iron binding function has not yet been identified. This gene resides in the same region of chromosome 3 as members of the transferrin superfamily. Alternative splicing results in two transcript variants.

**Molecular Characterization:** mass of 76.2 kDa after removal of the signal peptide. The apparent molecular mass of MELTF-His is approximately 70-100 kDa due to glycosylation.

**Tag :** C-6Å—His Tag

### Product Info

**Amount :** 50 µg / 100 µg

**Purification :** The purity of the protein is greater than 85% as determined by SDS-PAGE and Coomassie blue staining.

**Content :** Lyophilized from sterile PBS, pH 7.4. Normally 5 % - 8% trehalose is added as protectants before lyophilization.

**Storage condition :** Store at -20°C to -80°C for 12 months in lyophilized form. After reconstitution, if not intended for use within a month, aliquot and store at -80°C (Avoid repeated freezing and thawing). Lyophilized proteins are shipped at ambient temperature.

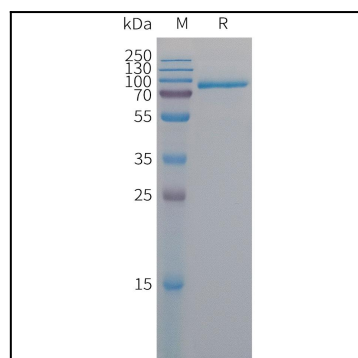


Figure 1. Human MELTF Protein, His Tag on SDS-PAGE under reducing condition.