

## 32-18290: Human CLEC4C Protein, His Tag

**Uniprot ID :** Q8WTT0  
**Alternative Name :** BDCA-2;CD303

### Description

**Description :** Recombinant Human CLEC4C Protein with C-terminal 6XHis tag

**Background :** This gene encodes a member of the C-type lectin/C-type lectin-like domain (CTL/CTLD) superfamily. Members of this family share a common protein fold and have diverse functions, such as cell adhesion, cell-cell signalling, glycoprotein turnover, and roles in inflammation and immune response. The encoded type 2 transmembrane protein may play a role in dendritic cell function. Two transcript variants encoding distinct isoforms have been identified for this gene.

**Molecular Characterization:** mass of 20.8 kDa after removal of the signal peptide. The apparent molecular mass of CLEC4C-His is approximately 25-35 kDa due to glycosylation.

**Tag :** C-6Å—His Tag

### Product Info

**Amount :** 50 µg / 100 µg

**Purification :** The purity of the protein is greater than 85% as determined by SDS-PAGE and Coomassie blue staining.

**Content :** Lyophilized from sterile PBS, pH 7.4. Normally 5 % - 8% trehalose is added as protectants before lyophilization.

**Storage condition :** Store at -20°C to -80°C for 12 months in lyophilized form. After reconstitution, if not intended for use within a month, aliquot and store at -80°C (Avoid repeated freezing and thawing). Lyophilized proteins are shipped at ambient temperature.

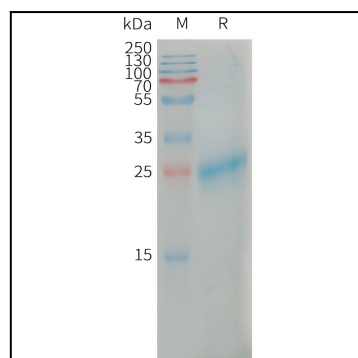


Figure 1. Human CLEC4C Protein, His Tag on SDS-PAGE under reducing condition.