

32-18331: Human CD62E Protein, His Tag

Uniprot ID : P16581

Alternative Name : ELAM;ESEL;SELE;ELAM1;LECAM2;selectin-e

Description

Description : Recombinant human CD62E Protein with C-terminal 6 \times His tag

Background : The protein encoded by this gene is found in cytokine-stimulated endothelial cells and is thought to be responsible for the accumulation of blood leukocytes at sites of inflammation by mediating the adhesion of cells to the vascular lining. It exhibits structural features such as the presence of lectin- and EGF-like domains followed by short consensus repeat (SCR) domains that contain 6 conserved cysteine residues. These proteins are part of the selectin family of cell adhesion molecules. Adhesion molecules participate in the interaction between leukocytes and the endothelium and appear to be involved in the pathogenesis of atherosclerosis.

Molecular Characterization: mass of 59.5 kDa after removal of the signal peptide. The apparent molecular mass of CD62E-His is approximately 100-130 kDa due to glycosylation.

Tag : C-6 \times His Tag

Product Info

Amount : 50 μ g / 100 μ g

Purification : The purity of the protein is greater than 85% as determined by SDS-PAGE and Coomassie blue staining.

Content : Lyophilized from sterile PBS, pH 7.4. Normally 5 % - 8% trehalose is added as protectants before lyophilization.

Storage condition : Store at -20°C to -80°C for 12 months in lyophilized form. After reconstitution, if not intended for use within a month, aliquot and store at -80°C (Avoid repeated freezing and thawing). Lyophilized proteins are shipped at ambient temperature.

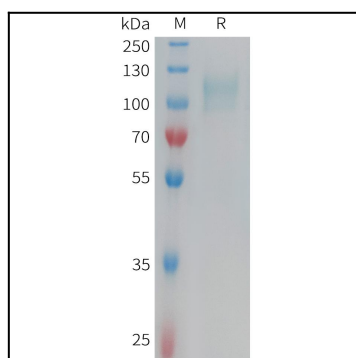


Figure 1. Human CD62E Protein, His Tag on SDS-PAGE under reducing condition.