

## 32-18345: Human PRL Protein, hFc Tag

**Uniprot ID :** P01236

**Alternative Name :** GHA1

### Description

**Description :** Recombinant human PRL Protein with C-terminal human Fc tag

**Background :** This gene encodes the anterior pituitary hormone prolactin. This secreted hormone is a growth regulator for many tissues, including cells of the immune system. It may also play a role in cell survival by suppressing apoptosis, and it is essential for lactation. Alternative splicing results in multiple transcript variants that encode the same protein.

**Molecular Characterization:** mass of 49.0 kDa after removal of the signal peptide. The apparent molecular mass of PRL-hFc is approximately 35-55 kDa due to glycosylation.

**Tag :** C-Human Fc tag

### Product Info

**Amount :** 50 µg / 100 µg

**Purification :** The purity of the protein is greater than 95% as determined by SDS-PAGE and Coomassie blue staining.

**Content :** Lyophilized from sterile PBS, pH 7.4. Normally 5 % - 8% trehalose is added as protectants before lyophilization.

**Storage condition :** Store at -20°C to -80°C for 12 months in lyophilized form. After reconstitution, if not intended for use within a month, aliquot and store at -80°C (Avoid repeated freezing and thawing). Lyophilized proteins are shipped at ambient temperature.

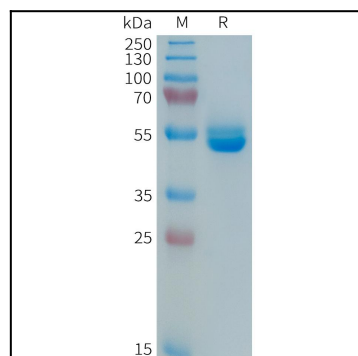


Figure 1. Human PRL Protein, hFc Tag on SDS-PAGE under reducing condition.