

32-18367: Human PRLR Protein, His Tag

Uniprot ID : P16471

Alternative Name : HPRL; MFAB; hPRLrI; RI-PRLR

Description

Description : Recombinant human PRLR Protein with C-terminal 10 \AA —His tag

Background : This gene encodes a receptor for the anterior pituitary hormone, prolactin, and belongs to the type I cytokine receptor family. Prolactin-dependent signaling occurs as the result of ligand-induced dimerization of the prolactin receptor. Several alternatively spliced transcript variants encoding different membrane-bound and soluble isoforms have been described for this gene, which may function to modulate the endocrine and autocrine effects of prolactin in normal tissue and cancer.

Molecular Characterization: mass of 25.8 kDa after removal of the signal peptide. The apparent molecular mass of PRLR-His is approximately 25-35 kDa due to glycosylation.

Tag : C-10 \AA —His tag

Product Info

Amount : 50 μg / 100 μg

Purification : The purity of the protein is greater than 85% as determined by SDS-PAGE and Coomassie blue staining.

Content : Lyophilized from sterile PBS, pH 7.4. Normally 5 % - 8% trehalose is added as protectants before lyophilization.

Storage condition : Store at -20°C to -80°C for 12 months in lyophilized form. After reconstitution, if not intended for use within a month, aliquot and store at -80°C (Avoid repeated freezing and thawing). Lyophilized proteins are shipped at ambient temperature.

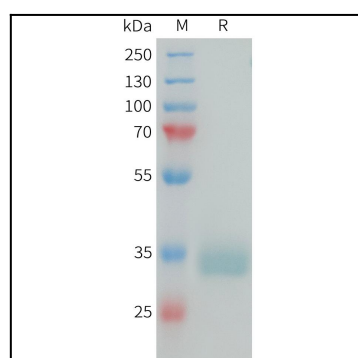


Figure 1. Human PRLR Protein, His Tag on SDS-PAGE under reducing condition.