

32-18373: Human C1S Protein, His Tag

Uniprot ID : P09871

Alternative Name : EDSPD2

Description

Description : Recombinant human C1S Protein with C-terminal 6 \times His tag

Background : This gene encodes a serine protease, which is a major constituent of the human complement subcomponent C1. C1s associates with two other complement components C1r and C1q in order to yield the first component of the serum complement system. Defects in this gene are the cause of selective C1s deficiency.

Molecular Characterization: mass of 75.7 kDa after removal of the signal peptide. The apparent molecular mass of C1S-His is approximately 70-100 kDa due to glycosylation.

Tag : C-6 \times His tag

Product Info

Amount : 50 μ g / 100 μ g

Purification : The purity of the protein is greater than 85% as determined by SDS-PAGE and Coomassie blue staining.

Content : Lyophilized from sterile PBS, pH 7.4. Normally 5 % - 8% trehalose is added as protectants before lyophilization.

Storage condition : Store at -20°C to -80°C for 12 months in lyophilized form. After reconstitution, if not intended for use within a month, aliquot and store at -80°C (Avoid repeated freezing and thawing). Lyophilized proteins are shipped at ambient temperature.

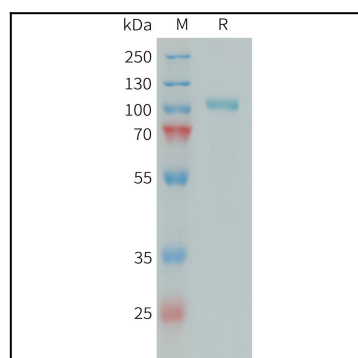


Figure 1. Human C1S Protein, His Tag on SDS-PAGE under reducing condition.