

12-9442: Anti-CSPG4 antibody(DMC466); IgG1 Chimeric mAb

Clonality :	Monoclonal
Clone Name :	DMC466
Application :	FACS
Reactivity :	Human
Uniprot ID :	Q6UVK1
Alternative Name :	CSPG4A; HMW-MAA; MCSP; MCSPG; MEL-CSPG; MSK16; NG2
Isotype :	Rabbit/Human Fc chimeric IgG1

Description

Description :Anti-CSPG4 antibody(DMC466); IgG1 Chimeric mAb

A human melanoma-associated chondroitin sulfate proteoglycan plays a role in stabilizing cell-substratum interactions during early events of melanoma cell spreading on endothelial basement membranes. CSPG4 represents an integral membrane chondroitin sulfate proteoglycan expressed by human malignant melanoma cells. [provided by RefSeq; Jul 2008]

Product Info

Amount :	10 µg / 100 µg
Purification :	Purified from cell culture supernatant by affinity chromatography
Content :	Lyophilized from sterile PBS, pH 7.4. Normally 5 % - 8% trehalose is added as protectants before lyophilization. Please see Certificate of Analysis for specific instructions of reconstitution.
Storage condition :	Store at -20°C to -80°C for 12 months in lyophilized form. After reconstitution, if not intended for use within a month, aliquot and store at -80°C (Avoid repeated freezing and thawing). Lyophilized proteins are shipped at ambient temperature.

Application Note

FACS 1:100

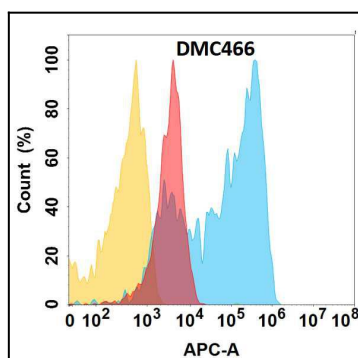


Figure 1. CSPG4 protein is highly expressed on the surface of Expi293 cell membrane. Flow cytometry analysis with Anti-CSPG4 (DMC466) on Expi293 cells transfected with human CSPG4 (Blue histogram) or Expi293 transfected with irrelevant protein (Red histogram), and Isotype antibody on Expi293 transfected with irrelevant protein (Orange histogram).