

12-9444: Anti-CLEC1A antibody(DMC468); IgG1 Chimeric mAb

Clonality :	Monoclonal
Clone Name :	DMC468
Application :	FACS
Reactivity :	Human
Uniprot ID :	Q8NC01
Alternative Name :	CLEC-1; CLEC1
Isotype :	Rabbit/Human Fc chimeric IgG1

Description

Description :Anti-CLEC1A antibody(DMC468); IgG1 Chimeric mAb

This gene encodes a member of the C-type lectin:C-type lectin-like domain (CTL:CTLD) superfamily. Members of this family share a common protein fold and have diverse functions; such as cell adhesion; cell-cell signaling; glycoprotein turnover; and roles in inflammation and immune response. The encoded protein may play a role in regulating dendritic cell function. This gene is closely linked to other CTL:CTLD superfamily members on chromosome 12p13 in the natural killer gene complex region. Alternative splicing results in multiple transcript variants. [provided by RefSeq; Jul 2014]

Product Info

Amount :	10 µg / 100 µg
Purification :	Purified from cell culture supernatant by affinity chromatography
Content :	Lyophilized from sterile PBS, pH 7.4. Normally 5 % - 8% trehalose is added as protectants before lyophilization. Please see Certificate of Analysis for specific instructions of reconstitution.
Storage condition :	Store at -20°C to -80°C for 12 months in lyophilized form. After reconstitution, if not intended for use within a month, aliquot and store at -80°C (Avoid repeated freezing and thawing). Lyophilized proteins are shipped at ambient temperature.

Application Note

FACS 1:100

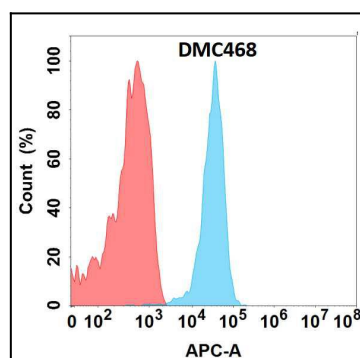


Figure 1. Flow cytometry analysis with Anti-CLEC1A (DMC468) on Expi293 cells transfected with human CLEC1A (Blue histogram) or Expi293 transfected with irrelevant protein (Red histogram).