

## 12-9451: Anti-SIGLEC7 antibody(DMC475); IgG1 Chimeric mAb

<b>Clonality :</b>	Monoclonal
<b>Clone Name :</b>	DMC475
<b>Application :</b>	FACS
<b>Reactivity :</b>	Human
<b>Uniprot ID :</b>	Q9Y286
<b>Alternative Name :</b>	AIRM-1; AIRM1; CD328; CDw328; D-siglec; p75; p75:AIRM1; QA79; SIGLEC-7; SIGLEC19P; SIGLECP2
<b>Isotype :</b>	Rabbit/Human Fc chimeric IgG1

### Description

Description :Anti-SIGLEC7 antibody(DMC475); IgG1 Chimeric mAb

Putative adhesion molecule that mediates sialic-acid dependent binding to cells. Preferentially binds to alpha-2,3- and alpha-2,6-linked sialic acid. Also binds disialogangliosides (disialogalactosyl globoside; disialyl lactotetraosylceramide and disialyl GalNAc lactotetraosylceramide). The sialic acid recognition site may be masked by cis interactions with sialic acids on the same cell surface. In the immune response; may act as an inhibitory receptor upon ligand induced tyrosine phosphorylation by recruiting cytoplasmic phosphatase(s) via their SH2 domain(s) that block signal transduction through dephosphorylation of signaling molecules. Mediates inhibition of natural killer cells cytotoxicity. May play a role in hemopoiesis. Inhibits differentiation of CD34 cell precursors towards myelomonocytic cell lineage and proliferation of leukemic myeloid cells (in vitro).[UniProtKB:Swiss-Prot Function]

### Product Info

<b>Amount :</b>	10 µg / 100 µg
<b>Purification :</b>	Purified from cell culture supernatant by affinity chromatography
<b>Content :</b>	Lyophilized from sterile PBS, pH 7.4. Normally 5 % - 8% trehalose is added as protectants before lyophilization. Please see Certificate of Analysis for specific instructions of reconstitution.
<b>Storage condition :</b>	Store at -20°C to -80°C for 12 months in lyophilized form. After reconstitution, if not intended for use within a month, aliquot and store at -80°C (Avoid repeated freezing and thawing). Lyophilized proteins are shipped at ambient temperature.

### Application Note

FACS 1:100

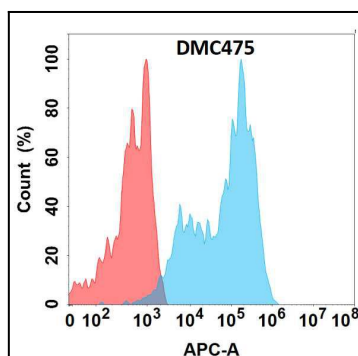


Figure 1. Flow cytometry analysis with Anti-SIGLEC7 (DMC475) on Expi293 cells transfected with human SIGLEC7 (Blue histogram) or Expi293 transfected with irrelevant protein (Red histogram).