

12-9453: Anti-CCR6 antibody(DMC477); IgG1 Chimeric mAb

Clonality :	Monoclonal
Clone Name :	DMC477
Application :	FACS
Reactivity :	Human
Uniprot ID :	P51684
Alternative Name :	BN-1; C-C CKR-6; CC-CKR-6; CCR-6; CD196; CKR-L3; CKRL3; CMKBR6; DCR2; DRY6; GPR29; GPRCY4; STRL22
Isotype :	Rabbit/Human Fc chimeric IgG1

Description

Description :Anti-CCR6 antibody(DMC477); IgG1 Chimeric mAb

This gene encodes a member of the beta chemokine receptor family; which is predicted to be a seven transmembrane protein similar to G protein-coupled receptors. The gene is preferentially expressed by immature dendritic cells and memory T cells. The ligand of this receptor is macrophage inflammatory protein 3 alpha (MIP-3 alpha). This receptor has been shown to be important for B-lineage maturation and antigen-driven B-cell differentiation; and it may regulate the migration and recruitment of dendritic and T cells during inflammatory and immunological responses. Alternatively spliced transcript variants that encode the same protein have been described for this gene. [provided by RefSeq; Jul 2008]

Product Info

Amount :	10 µg / 100 µg
Purification :	Purified from cell culture supernatant by affinity chromatography
Content :	Lyophilized from sterile PBS, pH 7.4. Normally 5 % - 8% trehalose is added as protectants before lyophilization. Please see Certificate of Analysis for specific instructions of reconstitution.
Storage condition :	Store at -20°C to -80°C for 12 months in lyophilized form. After reconstitution, if not intended for use within a month, aliquot and store at -80°C (Avoid repeated freezing and thawing). Lyophilized proteins are shipped at ambient temperature.

Application Note

FACS 1:100

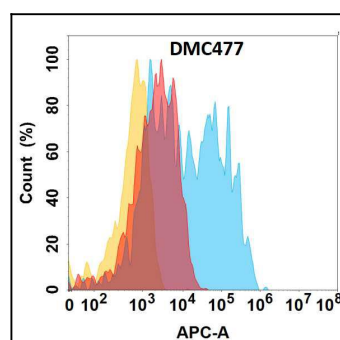


Figure 1. CCR6 protein is highly expressed on the surface of Expi293 cell membrane. Flow cytometry analysis with Anti-CCR6 (DMC477) on Expi293 cells transfected with human CCR6 (Blue histogram) or Expi293 transfected with irrelevant protein (Red histogram), and Isotype antibody on Expi293 transfected with irrelevant protein (Orange histogram).