

## 12-9456: Anti-DDR1 antibody(DMC480); IgG1 Chimeric mAb

<b>Clonality :</b>	Monoclonal
<b>Clone Name :</b>	DMC480
<b>Application :</b>	FACS
<b>Reactivity :</b>	Human
<b>Uniprot ID :</b>	Q08345
<b>Alternative Name :</b>	CAK; EDDR1; NEP; NTRK4; PTK3A; RTK6; TRKE; MCK-10; HGK2; CD167a
<b>Isotype :</b>	Rabbit/Human Fc chimeric IgG1

### Description

Description :Anti-DDR1 antibody(DMC480); IgG1 Chimeric mAb

Receptor tyrosine kinases play a key role in the communication of cells with their microenvironment. These kinases are involved in the regulation of cell growth; differentiation and metabolism. The protein encoded by this gene belongs to a subfamily of tyrosine kinase receptors with homology to Dictyostelium discoideum protein discoidin I in their extracellular domain; and that are activated by various types of collagen. Expression of this protein is restricted to epithelial cells; particularly in the kidney; lung; gastrointestinal tract; and brain. In addition; it has been shown to be significantly overexpressed in several human tumors. Alternatively spliced transcript variants encoding different isoforms have been described for this gene. [provided by RefSeq; Feb 2011]

### Product Info

<b>Amount :</b>	10 µg / 100 µg
<b>Purification :</b>	Purified from cell culture supernatant by affinity chromatography
<b>Content :</b>	Lyophilized from sterile PBS, pH 7.4. Normally 5 % - 8% trehalose is added as protectants before lyophilization. Please see Certificate of Analysis for specific instructions of reconstitution.
<b>Storage condition :</b>	Store at -20°C to -80°C for 12 months in lyophilized form. After reconstitution, if not intended for use within a month, aliquot and store at -80°C (Avoid repeated freezing and thawing). Lyophilized proteins are shipped at ambient temperature.

### Application Note

FACS 1:100

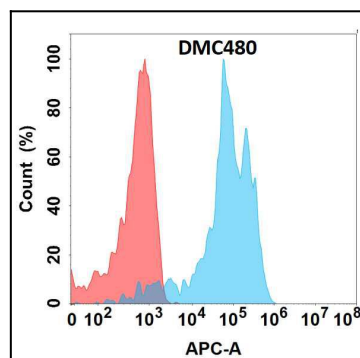


Figure 1. Flow cytometry analysis with Anti-DDR1 (DMC480) on Expi293 cells transfected with human DDR1 (Blue histogram) or Expi293 transfected with irrelevant protein (Red histogram).