

12-9462: Anti-CD23 antibody(DMC486); IgG1 Chimeric mAb

Clonality :	Monoclonal
Clone Name :	DMC486
Application :	FACS
Reactivity :	Human
Uniprot ID :	P06734
Alternative Name :	BLAST-2; CD23; CD23A; CLEC4J; FCE2; IGEBF
Isotype :	Rabbit/Human Fc chimeric IgG1

Description

Description :Anti-CDH23 antibody(DMC486); IgG1 Chimeric mAb

The protein encoded by this gene is a B-cell specific antigen; and a low-affinity receptor for IgE. It has essential roles in B cell growth and differentiation; and the regulation of IgE production. This protein also exists as a soluble secreted form; then functioning as a potent mitogenic growth factor. Alternatively spliced transcript variants encoding different isoforms have been described for this gene.[provided by RefSeq; Jul 2011]

Product Info

Amount :	10 µg / 100 µg
Purification :	Purified from cell culture supernatant by affinity chromatography
Content :	Lyophilized from sterile PBS, pH 7.4. Normally 5 % - 8% trehalose is added as protectants before lyophilization. Please see Certificate of Analysis for specific instructions of reconstitution.
Storage condition :	Store at -20°C to -80°C for 12 months in lyophilized form. After reconstitution, if not intended for use within a month, aliquot and store at -80°C (Avoid repeated freezing and thawing). Lyophilized proteins are shipped at ambient temperature.

Application Note

FACS 1:100

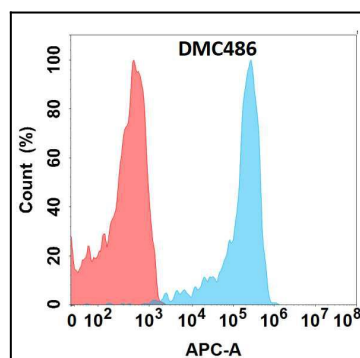


Figure 1. Flow cytometry analysis with Anti-CD23 (DMC486) on Expi293 cells transfected with human CD23 (Blue histogram) or Expi293 transfected with irrelevant protein (Red histogram).