

## 12-9472: Anti-GDNF antibody(DMC498); IgG1 Chimeric mAb

<b>Clonality :</b>	Monoclonal
<b>Clone Name :</b>	DMC498
<b>Application :</b>	FACS
<b>Reactivity :</b>	Human
<b>Uniprot ID :</b>	P39905
<b>Alternative Name :</b>	ATF; ATF1; ATF2; HFB1-GDNF; HSCR3
<b>Isotype :</b>	Rabbit/Human Fc chimeric IgG1

### Description

Description :Anti-GDNF antibody(DMC498); IgG1 Chimeric mAb

This gene encodes a secreted ligand of the TGF-beta (transforming growth factor-beta) superfamily of proteins. Ligands of this family bind various TGF-beta receptors leading to recruitment and activation of SMAD family transcription factors that regulate gene expression. The encoded preproprotein is proteolytically processed to generate each subunit of the disulfide-linked homodimer. The recombinant form of this protein; a highly conserved neurotrophic factor; was shown to promote the survival and differentiation of dopaminergic neurons in culture; and was able to prevent apoptosis of motor neurons induced by axotomy. This protein is a ligand for the product of the RET (rearranged during transfection) protooncogene. Mutations in this gene may be associated with Hirschsprung disease and Tourette syndrome. This gene encodes multiple protein isoforms that may undergo similar proteolytic processing. [provided by RefSeq; Aug 2016]

### Product Info

<b>Amount :</b>	10 µg / 100 µg
<b>Purification :</b>	Purified from cell culture supernatant by affinity chromatography
<b>Content :</b>	Lyophilized from sterile PBS, pH 7.4. Normally 5 % - 8% trehalose is added as protectants before lyophilization. Please see Certificate of Analysis for specific instructions of reconstitution.
<b>Storage condition :</b>	Store at -20°C to -80°C for 12 months in lyophilized form. After reconstitution, if not intended for use within a month, aliquot and store at -80°C (Avoid repeated freezing and thawing). Lyophilized proteins are shipped at ambient temperature.

### Application Note

FACS 1:100

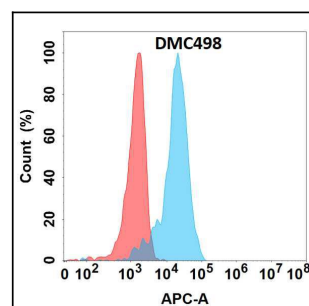


Figure 1. Flow cytometry analysis with Anti-GDNF (DMC498) on Expi293 cells transfected with human GDNF (Blue histogram) or Expi293 transfected with irrelevant protein (Red histogram).