

12-9474: Anti-HBEGF antibody(DMC500); IgG1 Chimeric mAb

| | |
|---------------------------|-------------------------------|
| Clonality : | Monoclonal |
| Clone Name : | DMC500 |
| Application : | FACS |
| Reactivity : | Human |
| Uniprot ID : | Q99075 |
| Alternative Name : | DTR; DTS; DTSF; HEGFL |
| Isotype : | Rabbit/Human Fc chimeric IgG1 |

Description

Description :Anti-HBEGF antibody(DMC500); IgG1 Chimeric mAb

Growth factor that mediates its effects via EGFR; ERBB2 and ERBB4. Required for normal cardiac valve formation and normal heart function. Promotes smooth muscle cell proliferation. May be involved in macrophage-mediated cellular proliferation. It is mitogenic for fibroblasts; but not endothelial cells. It is able to bind EGF receptor:EGFR with higher affinity than EGF itself and is a far more potent mitogen for smooth muscle cells than EGF. Also acts as a diphtheria toxin receptor.[UniProtKB:Swiss-Prot Function]

Product Info

| | |
|----------------------------|---|
| Amount : | 10 µg / 100 µg |
| Purification : | Purified from cell culture supernatant by affinity chromatography |
| Content : | Lyophilized from sterile PBS, pH 7.4. Normally 5 % - 8% trehalose is added as protectants before lyophilization. Please see Certificate of Analysis for specific instructions of reconstitution. |
| Storage condition : | Store at -20°C to -80°C for 12 months in lyophilized form. After reconstitution, if not intended for use within a month, aliquot and store at -80°C (Avoid repeated freezing and thawing). Lyophilized proteins are shipped at ambient temperature. |

Application Note

FACS 1:100

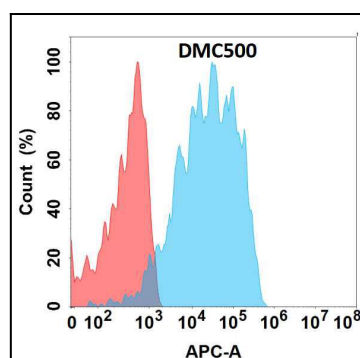


Figure 1. Flow cytometry analysis with Anti-HBEGF(DMC500) on Expi293 cells transfected with human HBEGF (Blue histogram) or Expi293 transfected with irrelevant protein (Red histogram).