

12-9477: Anti-CDH6 antibody(DMC675); IgG1 Chimeric mAb

Clonality :	Monoclonal
Clone Name :	DMC6765
Application :	FACS
Reactivity :	Human
Uniprot ID :	AAH00019
Alternative Name :	CDH6; K-cadherin
Isotype :	Rabbit/Human Fc chimeric IgG1

Description

Description :Anti-CDH6 antibody(DMC6765); IgG1 Chimeric mAb

This gene encodes a member of the cadherin superfamily. Cadherins are membrane glycoproteins that mediate homophilic cell-cell adhesion and play critical roles in cell differentiation and morphogenesis. The encoded protein is a type II cadherin and may play a role in kidney development as well as endometrium and placenta formation. Decreased expression of this gene may be associated with tumor growth and metastasis. [provided by RefSeq; May 2011]

Product Info

Amount :	10 µg / 100 µg
Purification :	Purified from cell culture supernatant by affinity chromatography
Content :	Lyophilized from sterile PBS, pH 7.4. Normally 5 % - 8% trehalose is added as protectants before lyophilization. Please see Certificate of Analysis for specific instructions of reconstitution.
Storage condition :	Store at -20°C to -80°C for 12 months in lyophilized form. After reconstitution, if not intended for use within a month, aliquot and store at -80°C (Avoid repeated freezing and thawing). Lyophilized proteins are shipped at ambient temperature.

Application Note

FACS 1:100

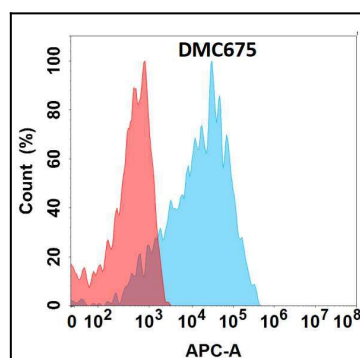


Figure 1. Flow cytometry analysis with Anti-CDH6(DMC675) on Expi293 cells transfected with human CDH6(Blue histogram) or Expi293 transfected with irrelevant protein (Red histogram).