

12-9479: Anti-CXCR4 antibody(DMC680); IgG1 Chimeric mAb

Clonality :	Monoclonal
Clone Name :	DMC680
Application :	FACS
Reactivity :	Human
Uniprot ID :	P61073; A0A0U3FJG0; A0A0U3GXA9
Alternative Name :	CD184; D2S201E; FB22; HM89; HSY3RR; LAP-3; LAP3; LCR1; LESTR; NPY3R; NPYR; NPYRL; NPY3R; WHIM; WHIMS
Isotype :	Rabbit/Human Fc chimeric IgG1

Description

Description :Anti-CXCR4 antibody(DMC680); IgG1 Chimeric mAb

This gene encodes a CXC chemokine receptor specific for stromal cell-derived factor-1. The protein has 7 transmembrane regions and is located on the cell surface. It acts with the CD4 protein to support HIV entry into cells and is also highly expressed in breast cancer cells. Mutations in this gene have been associated with WHIM (warts; hypogammaglobulinemia; infections; and myelokathexis) syndrome. Alternate transcriptional splice variants; encoding different isoforms; have been characterized. [provided by RefSeq; Jul 2008]

Product Info

Amount :	10 µg / 100 µg
Purification :	Purified from cell culture supernatant by affinity chromatography
Content :	Lyophilized from sterile PBS, pH 7.4. Normally 5 % - 8% trehalose is added as protectants before lyophilization. Please see Certificate of Analysis for specific instructions of reconstitution.
Storage condition :	Store at -20°C to -80°C for 12 months in lyophilized form. After reconstitution, if not intended for use within a month, aliquot and store at -80°C (Avoid repeated freezing and thawing). Lyophilized proteins are shipped at ambient temperature.

Application Note

FACS 1:100

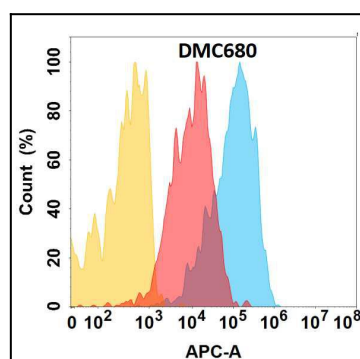


Figure 1. CXCR4 protein is expressed on the surface of Expi293 cell membrane. Flow cytometry analysis with Anti-CXCR4 (DMC680) on Expi293 cells transfected with human CXCR4 (Blue histogram) or Expi293 transfected with irrelevant protein (Red histogram), and Isotype antibody on Expi293 transfected with irrelevant protein (Orange histogram).