

12-9481: Anti-CD166 antibody(DMC682); IgG1 Chimeric mAb

Clonality :	Monoclonal
Clone Name :	DMC682
Application :	FACS
Reactivity :	Human
Uniprot ID :	Q13740-1
Alternative Name :	CD166; MEMD
Isotype :	Rabbit/Human Fc chimeric IgG1

Description

Description :Anti-CD166 antibody(DMC682); IgG1 Chimeric mAb

This gene encodes activated leukocyte cell adhesion molecule (ALCAM); also known as CD166 (cluster of differentiation 166); which is a member of a subfamily of immunoglobulin receptors with five immunoglobulin-like domains (VVC2C2C2) in the extracellular domain. This protein binds to T-cell differentiation antigene CD6; and is implicated in the processes of cell adhesion and migration. Multiple alternatively spliced transcript variants encoding different isoforms have been found. [provided by RefSeq; Aug 2011]

Product Info

Amount :	10 µg / 100 µg
Purification :	Purified from cell culture supernatant by affinity chromatography
Content :	Lyophilized from sterile PBS, pH 7.4. Normally 5 % - 8% trehalose is added as protectants before lyophilization. Please see Certificate of Analysis for specific instructions of reconstitution.
Storage condition :	Store at -20°C to -80°C for 12 months in lyophilized form. After reconstitution, if not intended for use within a month, aliquot and store at -80°C (Avoid repeated freezing and thawing). Lyophilized proteins are shipped at ambient temperature.

Application Note

FACS 1:100

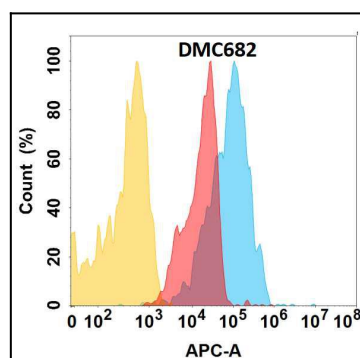


Figure 1. CD166 protein is expressed on the surface of Expi293 cell membrane. Flow cytometry analysis with Anti-CD166 (DMC682) on Expi293 cells transfected with human CD166 (Blue histogram) or Expi293 transfected with irrelevant protein (Red histogram), and Isotype antibody on Expi293 transfected with irrelevant protein (Orange histogram).