

12-9482: Anti-TENM4 antibody(DMC683); IgG1 Chimeric mAb

| | |
|---------------------------|---|
| Clonality : | Monoclonal |
| Clone Name : | DMC683 |
| Application : | FACS |
| Reactivity : | Human |
| Uniprot ID : | Q6N022 |
| Alternative Name : | Doc4; ETM5; ODZ4; ten-4; Ten-M4; TEN4; TNM4 |
| Isotype : | Rabbit/Human Fc chimeric IgG1 |

Description

Description :Anti-TENM4 antibody(DMC683); IgG1 Chimeric mAb

The protein encoded by this gene plays a role in establishing proper neuronal connectivity during development. Defects in this gene have been associated with hereditary essential tremor-5. [provided by RefSeq; Oct 2016]

Product Info

| | |
|----------------------------|---|
| Amount : | 10 µg / 100 µg |
| Purification : | Purified from cell culture supernatant by affinity chromatography |
| Content : | Lyophilized from sterile PBS, pH 7.4. Normally 5 % - 8% trehalose is added as protectants before lyophilization. Please see Certificate of Analysis for specific instructions of reconstitution. |
| Storage condition : | Store at -20°C to -80°C for 12 months in lyophilized form. After reconstitution, if not intended for use within a month, aliquot and store at -80°C (Avoid repeated freezing and thawing). Lyophilized proteins are shipped at ambient temperature. |

Application Note

FACS 1:100

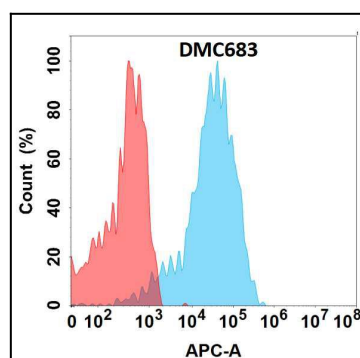


Figure 1. Flow cytometry analysis with Anti-TENM4(DMC683) on Expi293 cells transfected with human TENM4(Blue histogram) or Expi293 transfected with irrelevant protein (Red histogram).