

12-9483: Anti-CEACAM6 antibody(DMC685); IgG1 Chimeric mAb

Clonality :	Monoclonal
Clone Name :	DMC685
Application :	FACS
Reactivity :	Human
Uniprot ID :	P40199
Alternative Name :	CD66c; CEAL; NCA
Isotype :	Rabbit/Human Fc chimeric IgG1

Description

Description :Anti-CEACAM6 antibody(DMC685); IgG1 Chimeric mAb

This gene encodes a protein that belongs to the carcinoembryonic antigen (CEA) family whose members are glycosyl phosphatidyl inositol (GPI) anchored cell surface glycoproteins. Members of this family play a role in cell adhesion and are widely used as tumor markers in serum immunoassay determinations of carcinoma. This gene affects the sensitivity of tumor cells to adenovirus infection. The protein encoded by this gene acts as a receptor for adherent-invasive E. coli adhesion to the surface of ileal epithelial cells in patients with Crohn's disease. This gene is clustered with genes and pseudogenes of the cell adhesion molecules subgroup of the CEA family on chromosome 19. [provided by RefSeq; Apr 2014]

Product Info

Amount :	10 µg / 100 µg
Purification :	Purified from cell culture supernatant by affinity chromatography
Content :	Lyophilized from sterile PBS, pH 7.4. Normally 5 % - 8% trehalose is added as protectants before lyophilization. Please see Certificate of Analysis for specific instructions of reconstitution.
Storage condition :	Store at -20°C to -80°C for 12 months in lyophilized form. After reconstitution, if not intended for use within a month, aliquot and store at -80°C (Avoid repeated freezing and thawing). Lyophilized proteins are shipped at ambient temperature.

Application Note

FACS 1:100

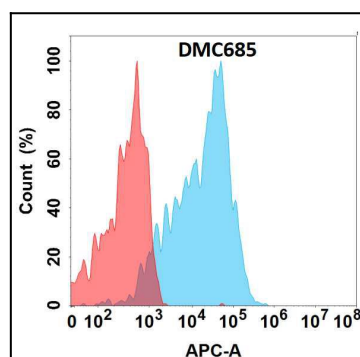


Figure 1. Flow cytometry analysis with Anti-CEACAM6(DMC685) on Expi293 cells transfected with human CEACAM6(Blue histogram) or Expi293 transfected with irrelevant protein (Red histogram).