

12-9486: Anti-ASGR1 antibody(DMC688); IgG1 Chimeric mAb

Clonality :	Monoclonal
Clone Name :	DMC688
Application :	FACS
Reactivity :	Human
Uniprot ID :	P07306; Q6FGQ5
Alternative Name :	ASGPR; ASGPR1; CLEC4H1; HL-1
Isotype :	Rabbit/Human Fc chimeric IgG1

Description

Description :Anti-ASGR1 antibody(DMC688); IgG1 Chimeric mAb

This gene encodes a subunit of the asialoglycoprotein receptor. This receptor is a transmembrane protein that plays a critical role in serum glycoprotein homeostasis by mediating the endocytosis and lysosomal degradation of glycoproteins with exposed terminal galactose or N-acetylgalactosamine residues. The asialoglycoprotein receptor may facilitate hepatic infection by multiple viruses including hepatitis B; and is also a target for liver-specific drug delivery. The asialoglycoprotein receptor is a hetero-oligomeric protein composed of major and minor subunits; which are encoded by different genes. The protein encoded by this gene is the more abundant major subunit. Alternatively spliced transcript variants encoding multiple isoforms have been observed for this gene. [provided by RefSeq; Jan 2011]

Product Info

Amount :	10 µg / 100 µg
Purification :	Purified from cell culture supernatant by affinity chromatography
Content :	Lyophilized from sterile PBS, pH 7.4. Normally 5 % - 8% trehalose is added as protectants before lyophilization. Please see Certificate of Analysis for specific instructions of reconstitution.
Storage condition :	Store at -20°C to -80°C for 12 months in lyophilized form. After reconstitution, if not intended for use within a month, aliquot and store at -80°C (Avoid repeated freezing and thawing). Lyophilized proteins are shipped at ambient temperature.

Application Note

FACS 1:100

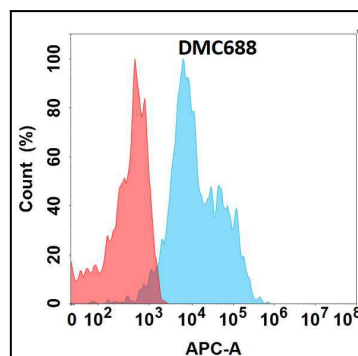


Figure 1. Flow cytometry analysis with Anti-ASGR1(DMC688) on Expi293 cells transfected with human ASGR1(Blue histogram) or Expi293 transfected with irrelevant protein (Red histogram).