

12-9489: Anti-GIPR antibody(3G5); IgG1 Chimeric mAb

Clonality :	Monoclonal
Clone Name :	3G5
Application :	FACS
Reactivity :	Human
Uniprot ID :	P48546
Alternative Name :	PGQTL2
Isotype :	Rabbit/Human Fc chimeric IgG1

Description

Description :Anti-GIPR antibody(3G5); IgG1 Chimeric mAb

This gene encodes a G-protein coupled receptor for gastric inhibitory polypeptide (GIP), which was originally identified as an activity in gut extracts that inhibited gastric acid secretion and gastrin release, but subsequently was demonstrated to stimulate insulin release in the presence of elevated glucose. Mice lacking this gene exhibit higher blood glucose levels with impaired initial insulin response after oral glucose load. Defect in this gene thus may contribute to the pathogenesis of diabetes. [provided by RefSeq, Oct 2011]

Product Info

Amount :	10 µg / 100 µg
Purification :	Purified from cell culture supernatant by affinity chromatography
Content :	Lyophilized from sterile PBS, pH 7.4. Normally 5 % - 8% trehalose is added as protectants before lyophilization. Please see Certificate of Analysis for specific instructions of reconstitution.
Storage condition :	Store at -20°C to -80°C for 12 months in lyophilized form. After reconstitution, if not intended for use within a month, aliquot and store at -80°C (Avoid repeated freezing and thawing). Lyophilized proteins are shipped at ambient temperature.

Application Note

FACS 1/100

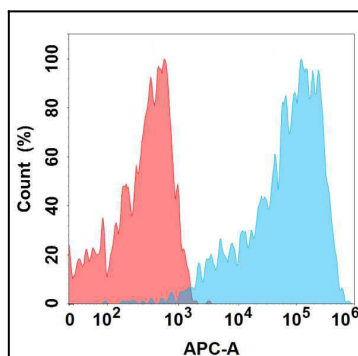


Figure 1. Flow cytometry analysis with Anti-GIPR (3G5) mAb on Expi293 cells transfected with human GIPR (Blue histogram) or Expi293 transfected with irrelevant protein (Red histogram).