

12-9497: Anti-CGRP antibody(7C1); IgG1 Chimeric mAb

Clonality :	Monoclonal
Clone Name :	7C1
Application :	FACS
Reactivity :	Human
Uniprot ID :	P06881
Alternative Name :	CALC1;CALCA;CGRP-alpha;CGRP-I;CGRP1;CT;KC;PCT
Isotype :	Rabbit/Human Fc chimeric IgG1

Description

Description :Anti-CGRP antibody(7C1); IgG1 Chimeric mAb

This gene encodes the peptide hormones calcitonin, calcitonin gene-related peptide and katacalcin by tissue-specific alternative RNA splicing of the gene transcripts and cleavage of inactive precursor proteins. Calcitonin is involved in calcium regulation and acts to regulate phosphorus metabolism. Calcitonin gene-related peptide functions as a vasodilator and as an antimicrobial peptide while katacalcin is a calcium-lowering peptide. Multiple transcript variants encoding different isoforms have been found for this gene.[provided by RefSeq, Aug 2014]

Product Info

Amount :	10 µg / 100 µg
Purification :	Purified from cell culture supernatant by affinity chromatography
Content :	Lyophilized from sterile PBS, pH 7.4. Normally 5 % - 8% trehalose is added as protectants before lyophilization. Please see Certificate of Analysis for specific instructions of reconstitution.
Storage condition :	Store at -20°C to -80°C for 12 months in lyophilized form. After reconstitution, if not intended for use within a month, aliquot and store at -80°C (Avoid repeated freezing and thawing). Lyophilized proteins are shipped at ambient temperature.

Application Note

FACS 1/100

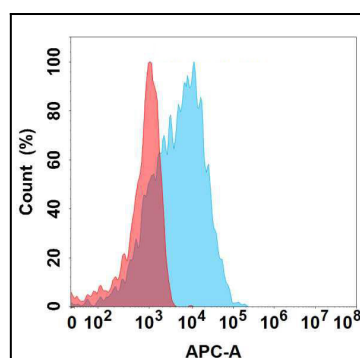


Figure 1. Flow cytometry analysis (Intracellular) with Anti-CGRP (7C1) mAb on Expi293 cells transfected with human CGRP (Blue histogram) or Expi293 transfected with irrelevant protein (Red histogram).