

12-9502: Anti-EGFRVIII antibody(2E12); IgG1 Chimeric mAb

Clonality :	Monoclonal
Clone Name :	2E12
Application :	FACS
Reactivity :	Human
Uniprot ID :	P00533
Alternative Name :	EGFR;RBB;RBB1;ER1;IG61;ENA
Isotype :	Rabbit/Human Fc chimeric IgG1

Description

Description :Anti-EGFRVIII antibody(2E12); IgG1 Chimeric mAb

The protein encoded by this gene is a transmembrane glycoprotein that is a member of the protein kinase superfamily. This protein is a receptor for members of the epidermal growth factor family. EGFR is a cell surface protein that binds to epidermal growth factor. Binding of the protein to a ligand induces receptor dimerization and tyrosine autophosphorylation and leads to cell proliferation. Mutations in this gene are associated with lung cancer.

Product Info

Amount :	10 µg / 100 µg
Purification :	Purified from cell culture supernatant by affinity chromatography
Content :	Lyophilized from sterile PBS, pH 7.4. Normally 5 % - 8% trehalose is added as protectants before lyophilization. Please see Certificate of Analysis for specific instructions of reconstitution.
Storage condition :	Store at -20°C to -80°C for 12 months in lyophilized form. After reconstitution, if not intended for use within a month, aliquot and store at -80°C (Avoid repeated freezing and thawing). Lyophilized proteins are shipped at ambient temperature.

Application Note

FACS 1/100

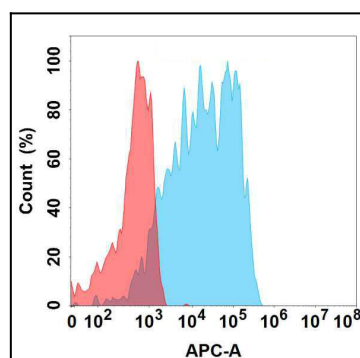


Figure 1. Flow cytometry analysis with Anti-EGFRVIII (2E12) mAb on Expi293 cells transfected with human EGFRVIII (Blue histogram) or Expi293 transfected with irrelevant protein (Red histogram).