

12-9528: Anti-UCHL1 antibody(2G7), Rabbit mAb

Clonality :	Monoclonal
Clone Name :	2G7
Application :	ELISA
Reactivity :	Human
Uniprot ID :	P09936
Alternative Name :	HEL-117; HEL-S-53; NDGOA; PARK5; PGP 9.5; PGP9.5; PGP95; SPG79; Uch-L1
Isotype :	Rabbit IgG

Description

Description :Anti-UCHL1 antibody(2G7), Rabbit mAb

The protein encoded by this gene belongs to the peptidase C12 family. This enzyme is a thiol protease that hydrolyzes a peptide bond at the C-terminal glycine of ubiquitin. This gene is specifically expressed in the neurons and in cells of the diffuse neuroendocrine system. Mutations in this gene may be associated with Parkinson disease.[provided by RefSeq, Sep 2009]

Product Info

Amount :	10 µg / 100 µg
Purification :	Purified from cell culture supernatant by affinity chromatography
Content :	Lyophilized from sterile PBS, pH 7.4. Normally 5 % - 8% trehalose is added as protectants before lyophilization. Please see Certificate of Analysis for specific instructions of reconstitution.
Storage condition :	Store at -20°C to -80°C for 12 months in lyophilized form. After reconstitution, if not intended for use within a month, aliquot and store at -80°C (Avoid repeated freezing and thawing). Lyophilized proteins are shipped at ambient temperature.

Application Note

ELISA 1:5000-10000

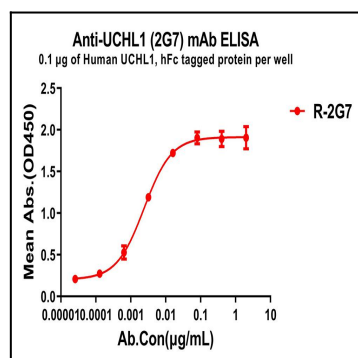


Figure 1. ELISA plate pre-coated by 1 $\hat{1}/4$ g/ml (100 $\hat{1}/4$ l/well) Human UCHL1 protein, hFc tagged protein can bind Rabbit anti-UCHL1 monoclonal antibody(clone: 2G7) in a linear range of 1-20 ng/ml.