

12-9600: Anti-Canine PD-1(INTERVET 4F12) mAb

Application : ELISA
Uniprot ID : NP_001301026.1
Alternative Name : 4F12
Isotype : IgG

Product Info

Amount : 50µg / 100 µg
Content : Lyophilized from sterile PBS, pH 7.4. Normally 5 % - 8% trehalose is added as protectants before lyophilization. Please see Certificate of Analysis for specific instructions of reconstitution.
Storage condition : Store at -20°C to -80°C for 12 months in lyophilized form. After reconstitution, if not intended for use within a month, aliquot and store at -80°C (Avoid repeated freezing and thawing). Lyophilized antibodies are shipped at ambient temperature.

Application Note

ELISA 1:5000-10000, FACS 1:100

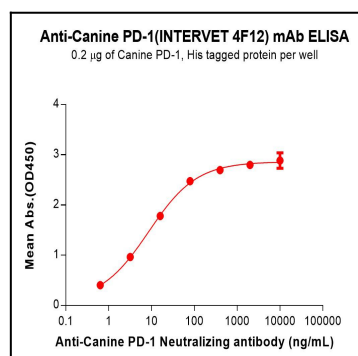


Figure 1. ELISA plate pre-coated by 2 µg/mL (100 µL/well) Canine PD-1 Protein, His Tag can bind Anti-Canine PD-1(INTERVET 4F12) mAb in a linear range of 0.64–80 ng/mL.

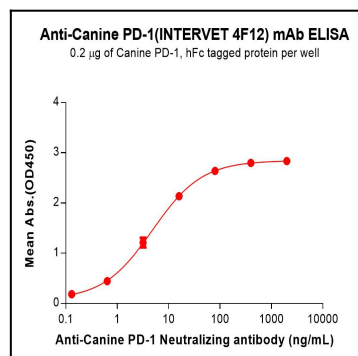


Figure 2. ELISA plate pre-coated by 2 µg/mL (100 µL/well) Canine PD-1 Protein, hFc Tag can bind Anti-Canine PD-1(INTERVET 4F12) mAb in a linear range of 0.64–80 ng/mL.

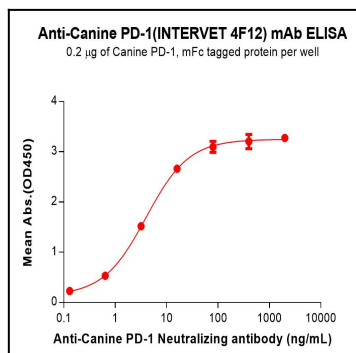


Figure 3. ELISA plate pre-coated by 2 μ g/mL (100 μ L/well) Canine PD-1 Protein, mFc Tag can bind Anti-Canine PD-1(INTERVET 4F12) mAb in a linear range of 0.64–80 ng/mL.

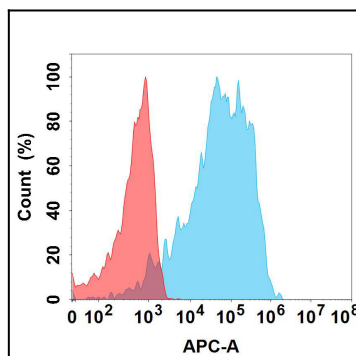


Figure 4. Flow cytometry analysis with 1 μ g/mL Anti-Canine PD-1(INTERVET 4F12) mAb on Expi293 cells transfected with Canine PD-1 protein (Blue histogram) or Expi293 transfected with irrelevant protein (Red histogram).