

### 30-2716PE-Cy7: Anti-Hu TCR gamma/delta (Clone: 11F2) PE Cy7 Conjugated

<b>Clonality :</b>	Monoclonal
<b>Clone Name :</b>	11F2
<b>Application :</b>	FACS
<b>Reactivity :</b>	Human
<b>Conjugate :</b>	PE/CY7
<b>Format :</b>	Purified
<b>Alternative Name :</b>	TCRG/D
<b>Isotype :</b>	Mouse IgG1
<b>Immunogen Information :</b>	Purified CD3 antigen complex

#### Description

The antigen-specific T cell receptor (TCR) is composed of either alpha and beta subunit, or gamma and delta subunit. Majority of T cells present in the blood, lymph and secondary lymphoid organs express TCR alpha/beta heterodimers, whereas the T cells expressing TCR gamma/delta heterodimers are localized mainly in epithelial tissues and at the sites of infection. The subunits of TCR heterodimers are covalently bonded and in the endoplasmic reticulum they associate with CD3 subunits to form functional TCR-CD3 complex. Lack of expression of any of the chains is sufficient to stop cell surface expression.

**Specificity :** The mouse monoclonal antibody 11F2 recognizes an extracellular epitope in all molecular forms of the TCR gamma/delta.

#### Product Info

<b>Amount :</b>	100 tests
<b>Purification :</b>	Purified by protein-A affinity chromatography.
<b>Content :</b>	Storage Buffer: Stabilizing phosphate buffered saline (PBS), pH 7.4, 15 mM sodium azide
<b>Storage condition :</b>	Store at 2-8°C. Do not freeze.

#### Application Note

Flow cytometry: Recommended dilution: 1-4 µg/ml.

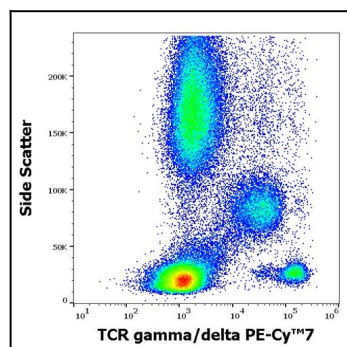


Figure 1: Flow cytometry surface staining pattern of human peripheral whole blood stained using anti-human TCR gamma/delta (11F2) PE-Cy<sup>™</sup>7 antibody (4 µl reagent / 100 µl of peripheral whole blood).

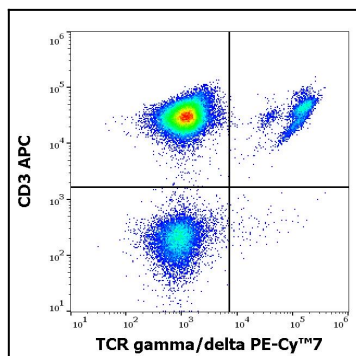


Figure 2: Flow cytometry multicolor surface staining of human lymphocytes stained using anti-human TCR gamma/delta (11F2) PE-Cy<sup>TM</sup> 7 antibody (4 µl reagent / 100 µl of peripheral whole blood) and anti-human CD3 (UCHT1) APC antibody (10 µl reagent / 100 µl of peripheral whole blood).

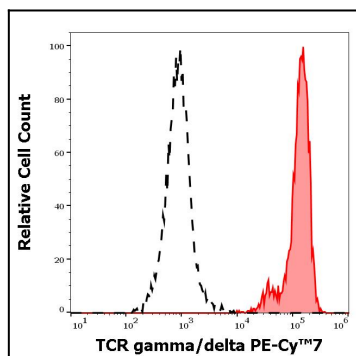


Figure 3: Separation of human TCR gamma/delta positive T cells (red-filled) from TCR gamma/delta negative CD3 negative lymphocytes (black-dashed) in flow cytometry analysis (surface staining) of human peripheral whole blood stained using anti-human TCR gamma/delta (11F2) PE-Cy<sup>TM</sup> 7 antibody (4 µl reagent / 100 µl of peripheral whole blood).