

30-1566-AC: Anti-CD146 Monoclonal Antibody (Clone:P1H12)-APC Conjugated

Clonality :	Monoclonal
Clone Name :	P1H12
Application :	FACS
Reactivity :	Dog,Mouse,Human,Rabbit
Conjugate :	APC
Gene :	MCAM
Gene ID :	4162
Uniprot ID :	P43121
Alternative Name :	MCAM,MUC18
Isotype :	Mouse IgG1
Immunogen Information :	cultured human umbilical cells

Description

CD146, also known as MCAM (melanoma cell adhesion molecule) or MUC18, is a heavily glycosylated transmembrane glycoprotein with more than 50% of the mass from carbohydrates. It is expressed on epithelial and endothelial cells, fibroblasts, multipotent mesenchymal stromal cells, activated T cells and activated keratinocytes, and on some cancer cells, especially melanoma. The presence of CD146 on circulating blood cells has been confined to the activated T cells rather than circulating endothelial cells. CD146 mediates heterophilic cell adhesion and regulates monocyte transendothelial migration.

Product Info

Amount :	100 tests
Content :	Stabilizing phosphate buffered saline (PBS), pH 7.4, 15 mM sodium azide.
Storage condition :	Store in the dark at 2-8°C. Do not freeze. Avoid prolonged exposure to light.

Application Note

Flow cytometry: The reagent is designed for analysis of human blood cells using 10 µl reagent / 100 µl of whole blood or 10⁶ cells in a suspension. The content of a vial (1 ml) is sufficient for 100 tests.

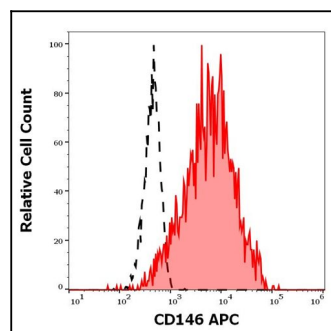


Figure 1: Separation of HUVEC cells stained using anti-human CD146 (P1H12) APC antibody (10 µl reagent per million cells in 100 µl of cell suspension, red-filled) from HUVEC cells stained using mouse IgG1 isotype control (MOPC-21) APC antibody (black-dashed) in flow cytometry analysis (surface staining).