

### 30-2925: Anti-Human CD226 Monoclonal Antibody (Clone:11A8)

<b>Clonality :</b>	Monoclonal
<b>Clone Name :</b>	11A8
<b>Application :</b>	FACS
<b>Reactivity :</b>	Human,Non-Human Primates
<b>Conjugate :</b>	Unconjugated
<b>Gene ID :</b>	10666
<b>Uniprot ID :</b>	Q15762
<b>Format :</b>	Purified
<b>Alternative Name :</b>	DNAM1, PTA1, TLISA1
<b>Isotype :</b>	Mouse IgG1 kappa

#### Description

CD226 is a type I transmembrane glycoprotein, which is expressed after activation on NK cells, platelets, monocytes, and some T cells. Its expression is increased in patients suffering from some autoimmune diseases or viral infections. CD226 is being phosphorylated on its cytoplasmic tail and interacts with LFA-1 complex (CD11a/CD18), resulting in calcium-independent intercellular contacts. Ligands for CD226 are CD155 and CD112.

#### Product Info

<b>Amount :</b>	0.1 mg
<b>Purification :</b>	Purified by protein-A affinity chromatography
<b>Content :</b>	1mg/ml, Phosphate buffered saline (PBS), pH 7.4, 15 mM sodium azide
<b>Storage condition :</b>	Store at 2-8°C. Do not freeze.

#### Application Note

Flow cytometry: Recommended dilution: 1-4 µg/ml.

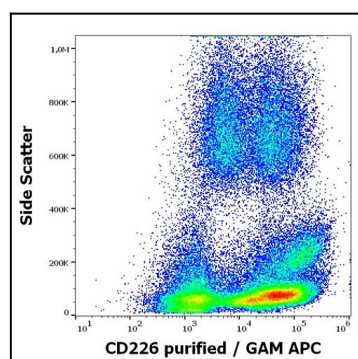


Figure 1:Flow cytometry surface staining pattern of human peripheral whole blood stained using anti-human CD226 (11A8) purified antibody (concentration in sample 0,56 µg/ml, GAM APC).

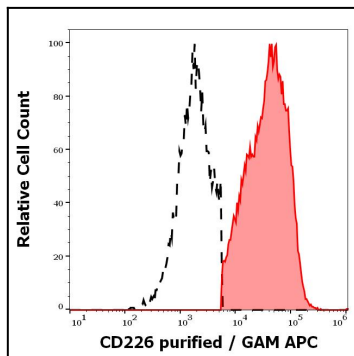


Figure 2: Separation of human CD226 positive lymphocytes (red-filled) from CD226 negative lymphocytes (black-dashed) in flow cytometry analysis (surface staining) of human peripheral whole blood stained using anti-human CD226 (11A8) purified antibody (concentration in sample 0,56 µg/ml, GAM APC).