

### 30-2868-PE: PE Conjugated Anti-Human SIGLEC10 Mab (Clone: 5G6 )

<b>Clonality :</b>	Monoclonal
<b>Clone Name :</b>	5G6
<b>Application :</b>	FACS
<b>Reactivity :</b>	Human
<b>Conjugate :</b>	PE
<b>Gene :</b>	SIGLEC10
<b>Gene ID :</b>	89790
<b>Uniprot ID :</b>	Q96LC7
<b>Format :</b>	Purified
<b>Alternative Name :</b>	PRO940, SGL2, sialic acid binding Ig like lectin 10
<b>Isotype :</b>	Mouse IgG1
<b>Immunogen Information :</b>	SIGLEC10 extracellular domain fused with human IgG1 Fc fragment

#### Description

**Specificity :** The mouse monoclonal antibody 5G6 recognizes an extracellular epitope of human SIGLEC10, a sialic acid-binding lectin expressed on subsets of human leucocytes.

SIGLEC10 is a CD33-related receptor of sialoglycans, expressed on eosinophils, monocytes, a subpopulation of NK cells, and at lower level on B cells. Its murine ortholog is Siglec G. SIGLEC10 seems to act as an immunomodulatory receptor, which binds to VAP-1, a glycoprotein expressed on endothelium under inflammatory conditions. Another ligand of SIGLEC10 is CD24, a marker of poorer prognosis in carcinomas.

#### Product Info

<b>Amount :</b>	100 Tests
<b>Purification :</b>	Purified antibody is conjugated with R-phycoerythrin (PE) under optimum conditions. Unconjugated antibody and free fluorochrome are removed by size-exclusion chromatography.
<b>Content :</b>	Phosphate buffered saline (PBS), pH 7.4, 15 mM sodium azide
<b>Storage condition :</b>	Store at 2-8°C. Do not freeze. Avoid exposure to light.

#### Application Note

**Flow cytometry:** The reagent is designed for analysis of human blood cells using 10 µl reagent / 100 µl of whole blood or 106 cells in a suspension. The content of a vial (1 ml) is sufficient for 100 tests.

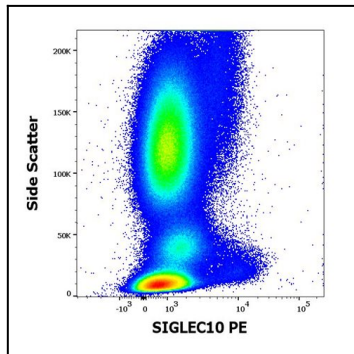


Figure 1: Analysis of the antibody staining profile was performed on blood leukocytes isolated from buffy coats. HCDM CDMaps standardized procedures (Kuzilkova D et al. Front Immunol. 2022;13:827898) were used for cell isolation and surface staining of blood leukocytes, with the modification of staining protocol using cytometry test tubes. Mouse monoclonal anti-human SIGLEC10 PE antibody (clone 5G6) was used in amount of 10  $\mu$ l in 100  $\mu$ l of blood sample ( $2 \times 10^6$  cells).