

30-2930AF-488: Alexa Fluor® 488 Conjugated Anti-alpha-Tubulin Monoclonal Antibody (Clone: YOL1/34)

Clonality :	Monoclonal
Clone Name :	YOL1/34
Application :	IHC,FACS,WB
Gene ID :	7277
Uniprot ID :	Q71U36
Format :	Purified
Alternative Name :	TUBA
Isotype :	Rat IgG2a
Immunogen Information :	Yeast tubulin

Description

The rat monoclonal antibody YOL1/34 recognizes an epitope of alpha-tubulin localized between amino acids 414-422. It has higher affinity for fixed microtubules than for native ones.

Product Info

Amount :	0.1 mg
Purification :	Purified antibody is conjugated with Alexa Fluor® 488 NHS ester under optimum conditions and unconjugated antibody and free fluorochrome are removed by size-exclusion chromatography.
Content :	0.1mg/ml, Phosphate buffered saline (PBS), pH 7.4, 15 mM sodium azide
Storage condition :	Store at 2-8°C protected from light. Do not freeze.

Application Note

Immunocytochemistry: Recommended dilution: 2-10 µg/ml

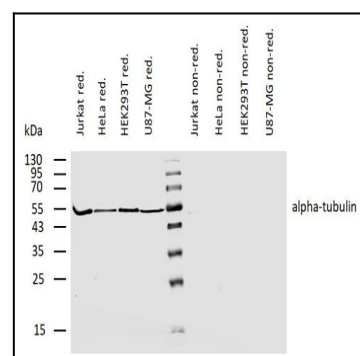


Figure 1: Immunocytochemistry staining of alpha tubulin in HeLa cells by mouse monoclonal antibody YOL1/34 conjugated with Alexa Fluor 488 (4 µg/ml; green).