

30-2507PE: PE Conjugated Anti-MHC Class I (Alpha+Beta2m chains) Monoclonal Antibody (Clone: IVA26)

Clonality :	Monoclonal
Clone Name :	IVA26
Application :	FACS
Reactivity :	Sheep,Pig,Mouse,Human,Bovine,Rabbit
Conjugate :	PE
Isotype :	Mouse IgG1
Immunogen Information :	Bovine lymphocytes

Description

HLA-class I major histocompatibility (MHC) antigens are intrinsic membrane glycoproteins expressed on nucleated cells and noncovalently associated with an invariant beta2 microglobulin. They carry foreign determinants important for immune recognition by cytotoxic T cells, thus important for anti-viral and anti-tumour defence.

Specificity: The mouse monoclonal antibody IVA26 recognizes an extracellular epitope on MHC class I (alpha + beta2m chains) expressed in various animals.

Product Info

Amount :	0.1 mg
Purification :	Purified antibody is conjugated with R-phycoerythrin (PE) under optimum conditions. Unconjugated antibody and free fluorochrome are removed by size-exclusion chromatography.
Content :	Stabilizing phosphate buffered saline (PBS), pH 7.4, 15 mM sodium azide
Storage condition :	Store at 2-8°C. Protect from prolonged exposure to light. Do not freeze.

Application Note

Flow cytometry: Recommended dilution: 0.5-4 µg/ml.

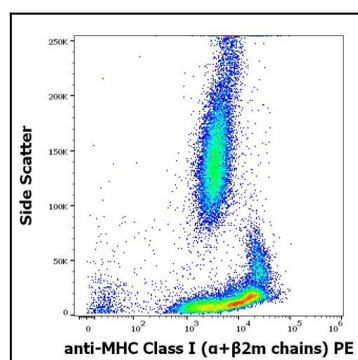


Figure 1: Flow cytometry surface staining pattern of human peripheral whole blood stained using anti-MHC Class I (alpha+beta2m chains) (IVA26) PE antibody (concentration in sample 0.56 µg/ml).

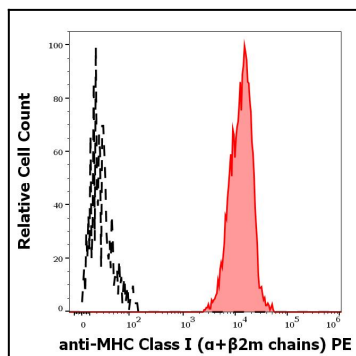


Figure 2: Separation of human lymphocytes (red-filled) from MHC Class I negative blood debris (black-dashed) in flow cytometry analysis (surface staining) of human peripheral whole blood stained using anti-MHC Class I (alpha+beta2m chains) (IVA26) PE antibody (concentration in sample 0.56 µg/ml).