

### 36-1783: Monoclonal Antibody to Tyrosinase-Related Protein-1 (TYRP-1) (Melanoma Marker)(Clone : SPM611)

|                                |   |
|--------------------------------|---|
| <b>Clonality :</b>             | Monoclonal                                  |
| <b>Clone Name :</b>            | SPM611                                      |
| <b>Application :</b>           | FACS,IF,IHC                                 |
| <b>Reactivity :</b>            | Human, Mouse                                |
| <b>Gene :</b>                  | TYRP1                                       |
| <b>Gene ID :</b>               | 7306  |
| <b>Uniprot ID :</b>            | P17643                                      |
| <b>Format :</b>                | Purified                                    |
| <b>Alternative Name :</b>      | TYRP1,CAS2,TYRP,TYRRP                       |
| <b>Isotype :</b>               | Mouse IgG2a, kappa                          |
| <b>Immunogen Information :</b> | Recombinant full-length human TYRP1 protein |

#### Description

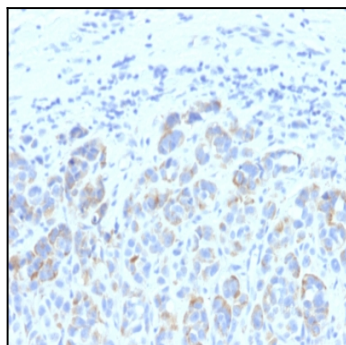
It reacts with a 75kDa melanocyte-specific gene product, identified as Tyrosinase-related protein-1 (TRP-1). It is involved in melanin synthesis. TRP1 is present on the melanosomal membranes of melanoma, normal melanocytes and nevi. Recent evidence suggests that TRP-1 is involved in maintaining stability of tyrosinase protein and modulating its catalytic activity. TRP-1 is also involved in maintenance of melanosome ultrastructure and affects melanocyte proliferation and cell death.

#### Product Info

|                            |   |
|----------------------------|---|
| <b>Amount :</b>            | 100 µg  |
| <b>Purification :</b>      | Affinity Chromatography   |
| <b>Content :</b>           | 100 µg in 500 µl PBS containing 0.05% BSA and 0.05% sodium azide. Sodium azide is highly toxic.                               |
| <b>Storage condition :</b> | Store the antibody at 4°C; stable for 6 months. For long-term storage; store at -20°C. Avoid repeated freeze and thaw cycles. |

#### Application Note

Flow Cytometry (1-2ug/million cells); Immunofluorescence (1-2ug/ml); Immunohistochemistry (Formalin-fixed) (2-4ug/ml for 30 minutes at RT)(Staining of formalin-fixed tissues requires heating tissue sections in 10mM Tris with 1mM EDTA, pH 9.0, for 45 min at 95&degC followed by cooling at RT for 20 minutes)



Formalin-fixed, paraffin-embedded human Melanoma stained with TYRP1 Monoclonal Antibody (SPM611)