

12-9627: Anti-CLDN6 antibody(407C3), IgG1 Chimeric mAb

Clonality :	Monoclonal
Clone Name :	407C3
Reactivity :	Human
Gene :	CLDN6
Uniprot ID :	P56747
Alternative Name :	Claudin 6;Claudin-6;Skullin
Isotype :	Rabbit/Human Fc chimeric IgG1

Description

Tight junctions represent one mode of cell-to-cell adhesion in epithelial or endothelial cell sheets, forming continuous seals around cells and serving as a physical barrier to prevent solutes and water from passing freely through the paracellular space. These junctions are comprised of sets of continuous networking strands in the outwardly facing cytoplasmic leaflet, with complementary grooves in the inwardly facing extracytoplasmic leaflet. This gene encodes a component of tight junction strands, which is a member of the claudin family. The protein is an integral membrane protein and is one of the entry cofactors for hepatitis C virus. The gene methylation may be involved in esophageal tumorigenesis. This gene is adjacent to another family member CLDN9 on chromosome 16.[provided by RefSeq, Aug 2010]

Product Info

Amount :	10µg / 100 µg
Purification :	Purified from cell culture supernatant by affinity chromatography
Content :	Lyophilized from sterile PBS, pH 7.4. Normally 5 % - 20% trehalose is added as protectants before lyophilization. Please see Certificate of Analysis for specific instructions of reconstitution.
Storage condition :	Store at -20°C to -80°C for 12 months in lyophilized form. After reconstitution, if not intended for use within a month, aliquot and store at -80°C(Avoid repeated freezing and thawing). Lyophilized proteins are shipped at ambient temperature.

Application Note

Flow Cyt 1/100

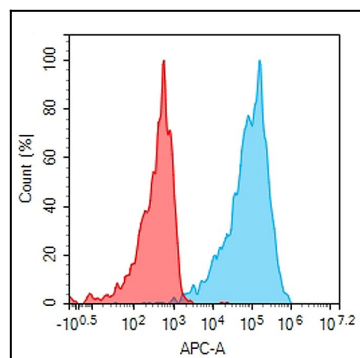


Figure 1. Flow cytometry analysis with 1µg/mL Anti-CLDN6 mAb on Expi293 cells transfected with human CLDN6 (Blue histogram) or Expi293 transfected with irrelevant protein (Red histogram).